



Highland Archaeology Services Ltd

Avingormack Steading / Docharn Lodge



Boat of Garten, Inverness-shire

Photographic record 2005

Report No. HAS050601

Client	Mr. N Morrison
Date	12 June 2005

Forsyth House High Street Cromarty Ross-shire IV11 8UZ Tel: 01381 600491 Fax: 07075 055074
Mobile: 07834 693378 Email: info@hi-arch.co.uk Web: www.hi-arch.co.uk

Registered in Scotland no. 262144

VAT No. 838 7358 80

Registered Office: 10 Knockbreck Street, Tain, Ross-shire IV19 1BJ

Contents

Figures	2
Summary.....	2
Introduction:	2
Location.....	3
Background.....	3
Photographic record - aims and methods.....	5
Results	5
Conclusion and Recommendations.....	9
Appendix 1: Index to Photographs	10
Appendix 2: Highland Council Brief.....	13

Figures

Figure 1 Location map.....	3
Figure 2 First edition OS 6" map (1875)	4
Figure 3 Camera locations.....	4
Figure 4 Barn, showing foundations and ashlar stonework	5
Figure 5 Barn, showing feeding troughs and one former stall division (View from N)	6
Figure 6 Barn - roof construction (view from N)	6
Figure 7 Shed (View from SW).....	7
Figure 8 Shed interior (from N).....	7
Figure 9 Kiln - draw hole.....	8
Figure 10 Kiln (View from E)	8
Figure 11 View from N, showing probable site of limekiln on 1st edition OS map.....	9
Figure 12 Possible site of former house.....	9

Summary

A digital photographic record was made of Avingormack Steading, Boat of Garten, Inverness-shire in advance of redevelopment of the site for residential use. The steading consists of two buildings, one long barn built of local freestone and a smaller wooden shed on a concrete base. The longer building seems to be built onto older, more substantial stone foundations, and is shown on the 1st edition Ordnance Survey 6" map (1875). The shed is clearly mid-late 20th c. in date. A former limekiln and the possible sites of other former buildings were identified.

Introduction:

A digital photographic record was made of Avingormack Steading, Boat of Garten, Inverness-shire as a required by a planning condition for redevelopment of the site for residential accommodation. It was carried out for Highland Archaeology Services Ltd by John Wood MIFA on 10 June 2005. The weather was sunny and dry. This report provides background and location information. A full set of photographs and index information in digital form is on the attached CDROM.

Location

Avingormack lies between Carrbridge and Boat of Garten, alongside the B9153 road at Ordnance Survey National Grid Reference NH 9146 1940



Figure 1 Location map

Maps reproduced with permission. Ordnance Survey Licence No. 100043217

Background

Avingormack consists of a modern house and garden, and two buildings that make up the steading – a barn built mainly of local freestone, and a smaller wooden shed on a concrete base. The barn is shown on the 1st edition Ordnance Survey 6" map (1875), but seems to have been rebuilt on older foundations. Its roofing slates have been removed exposing the sarking. The shed is clearly mid-late 20th c. in date.

The 1st edition OS 6-inch map also shows several buildings that have since disappeared. These include a house, oriented N-S in the area of the present, modern house, and small buildings to the west and south of the surviving barn. A limekiln is marked to the north.

The steading is currently under pasture and grazed by sheep. There is open natural birch woodland to the north and east. This seems to be very similar to the situation shown on the 1875 map.

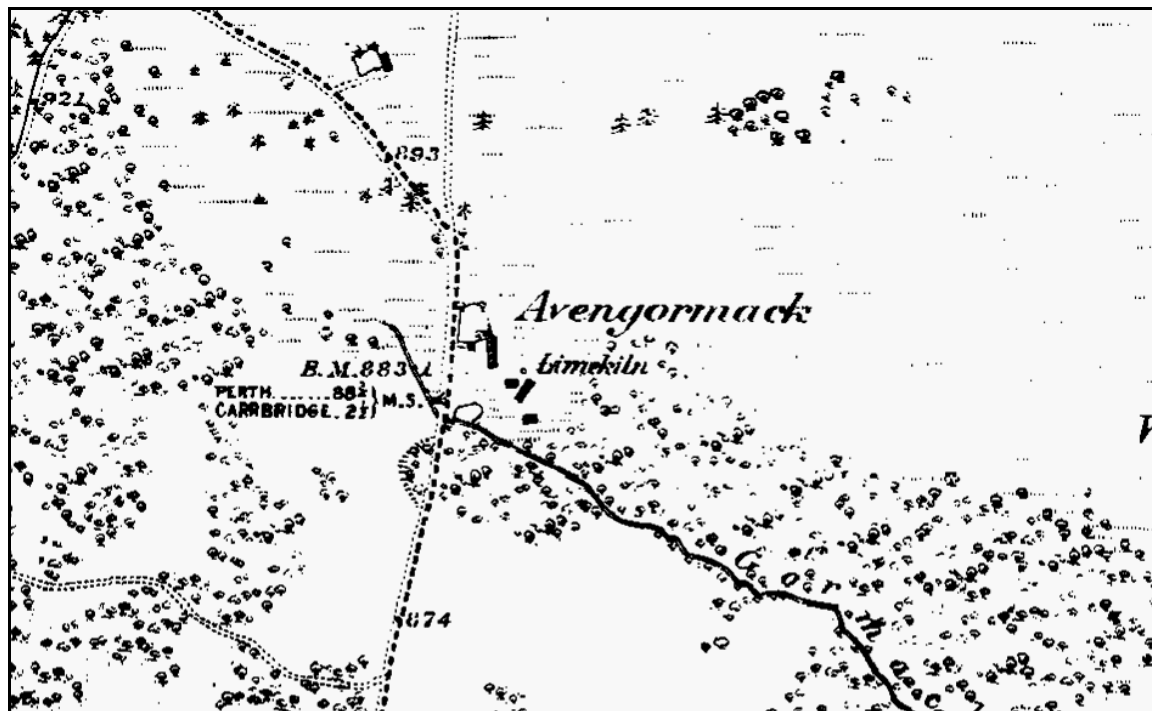


Figure 2 First edition OS 6" map (1875)
(Not to scale)

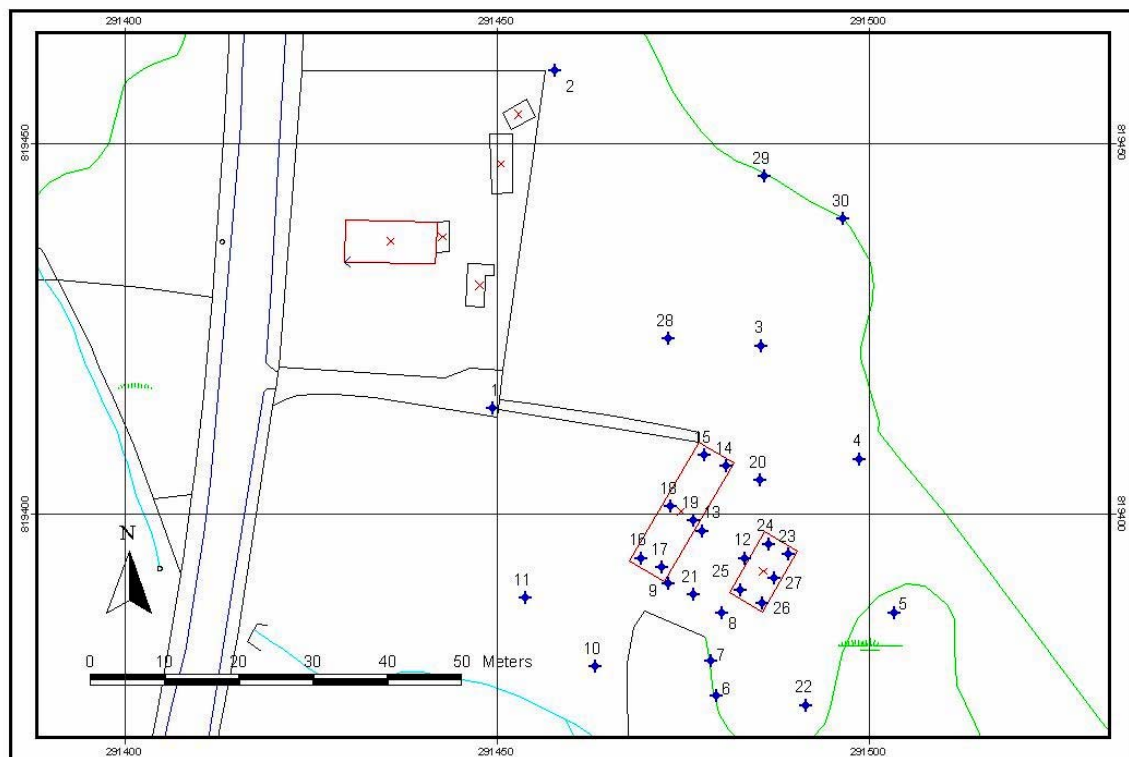


Figure 3 Camera locations

Photographic record - aims and methods

The objective was to make a photographic record of the buildings and site prior to the start of redevelopment for the benefit of future research.

Only the most basic documentary or map based background research was carried out. The plans included in this report are all derived from Ordnance Survey digital data reproduced with permission under Licence no. 100043217

The site was visited on 10 June 2005. All photographs were taken using a digital Pentax **istDS* SLR camera at 6.1 megapixels resolution. Only a selection of photographs is included here. The full set is included on the attached CDROM, together with digital versions of the index and the plans.

Results

The barn seems to be built onto older, more substantial stone foundations, and around the central doorway in the east wall are ashlar blocks. Perhaps in its present form it was rebuilt from a ruin. Inside, there are the marks on the west wall of former animal stalls and at the southern end a line of feeding troughs. (Figs 4, 5, 6).

A retaining wall south of the steading was noted on site which may be the north wall of the building shown in 1875. It seems to have formed part of a kiln (Figs 9, 10). Indeed the whole steading seems to be based on a platform, built of or reinforced with field clearance stone, which provides a level surface on the sloping hillside. There is little sign of the limekiln shown on the 1st edition OS map, but indications of a roughly square building to the north of the barn may be the site. (Fig. 11)

Immediately north of the steading running east-west is a rectangular platform cut into the hill-slope, which could represent the footings of a former long-house or barn. (Fig. 12)



Figure 4 Barn, showing foundations and ashlar stonework



Figure 5 Barn, showing feeding troughs and one former stall division (View from N)



Figure 6 Barn - roof construction (view from N)



Figure 7 Shed (View from SW)



Figure 8 Shed interior (from N)



Figure 9 Kiln - draw hole



Figure 10 Kiln (View from E)



Figure 11 View from N, showing probable site of limekiln on 1st edition OS map



Figure 12 Possible site of former house

Conclusion and Recommendations

The steading currently consists of two buildings, of which the larger one stands on the footings of an earlier building. Indications of other former buildings on the site, including two limekilns, were noted on site or from the 1st edition OS map. Any further evidence of these and other former buildings or occupation on the site should be noted and recorded during the site excavation works.

Appendix 1: Index to Photographs

Photographs are © Copyright Highland Archaeology Services Ltd and John Wood. They may be reproduced without charge provided this acknowledgement is made.

Photo no.	Camera Location	Notes	Taken by	Date
IMGP2133	1	View from W	JW	10/06/2005
IMGP2134	2	View from NW	JW	10/06/2005
IMGP2135	3	View from N	JW	10/06/2005
IMGP2136	3	View from N (zoom)	JW	10/06/2005
IMGP2137	3	View from N (zoom)	JW	10/06/2005
IMGP2138	4	View from NE	JW	10/06/2005
IMGP2139	4	View from NE (zoom)	JW	10/06/2005
IMGP2140	4	View from NE (zoom)	JW	10/06/2005
IMGP2141	5	View from E	JW	10/06/2005
IMGP2142	5	View from E	JW	10/06/2005
IMGP2143	5	View from E	JW	10/06/2005
IMGP2144	6	View from SE: limekiln	JW	10/06/2005
IMGP2145	6	View from SE: limekiln	JW	10/06/2005
IMGP2146	7	Limekiln - draw hole	JW	10/06/2005
IMGP2147	8	Limekiln	JW	10/06/2005
IMGP2148	9	Shed from W	JW	10/06/2005
IMGP2149	9	Limekiln from NW	JW	10/06/2005
IMGP2150	10	View from S	JW	10/06/2005
IMGP2151	10	View from S (zoom)	JW	10/06/2005
IMGP2152	10	View from S (zoom)	JW	10/06/2005
IMGP2153	11	View from SW	JW	10/06/2005
IMGP2154	12	Barn from E	JW	10/06/2005
IMGP2155	12	Barn from E	JW	10/06/2005
IMGP2156	12	Barn from E	JW	10/06/2005
IMGP2157	13	Shed from W	JW	10/06/2005
IMGP2158	13	Looking NNE along barn wall	JW	10/06/2005
IMGP2159	13	View S to limekiln	JW	10/06/2005
IMGP2160	14	Interior of barn	JW	10/06/2005
IMGP2161	14	Interior of barn	JW	10/06/2005
IMGP2162	14	Interior of barn	JW	10/06/2005
IMGP2163	15	Interior of barn	JW	10/06/2005
IMGP2164	15	Interior of barn	JW	10/06/2005
IMGP2165	16	Interior of barn	JW	10/06/2005
IMGP2166	16	Interior of barn	JW	10/06/2005
IMGP2167	17	Interior of barn	JW	10/06/2005
IMGP2168	17	Interior of barn	JW	10/06/2005

Photo no.	Camera Location	Notes	Taken by	Date
IMGP2169	19	Interior of barn	JW	10/06/2005
IMGP2170	19	Interior of barn	JW	10/06/2005
IMGP2171	19	Interior of barn	JW	10/06/2005
IMGP2172	19	Interior of barn	JW	10/06/2005
IMGP2173	18	Interior of barn	JW	10/06/2005
IMGP2174	18	Interior of barn	JW	10/06/2005
IMGP2175	18	Interior of barn	JW	10/06/2005
IMGP2176	18	Interior of barn	JW	10/06/2005
IMGP2177	18	Interior of barn	JW	10/06/2005
IMGP2178	20	View NNE to platform (Former house site?)	JW	10/06/2005
IMGP2179	20	View S	JW	10/06/2005
IMGP2180	20	View S	JW	10/06/2005
IMGP2181	20	View SSW	JW	10/06/2005
IMGP2182	20	View SW	JW	10/06/2005
IMGP2183	20	View W	JW	10/06/2005
IMGP2184	20	View W	JW	10/06/2005
IMGP2185	21	View E	JW	10/06/2005
IMGP2186	21	View E	JW	10/06/2005
IMGP2187	21	View N	JW	10/06/2005
IMGP2188	21	View N	JW	10/06/2005
IMGP2189	21	View W	JW	10/06/2005
IMGP2190	22	View W - kiln	JW	10/06/2005
IMGP2191	22	View NW	JW	10/06/2005
IMGP2192	22	View NW	JW	10/06/2005
IMGP2193	22	View N	JW	10/06/2005
IMGP2195	23	Interior of shed	JW	10/06/2005
IMGP2196	23	Interior of shed	JW	10/06/2005
IMGP2197	23	Interior of shed	JW	10/06/2005
IMGP2198	24	Interior of shed	JW	10/06/2005
IMGP2199	24	Interior of shed	JW	10/06/2005
IMGP2200	25	Interior of shed	JW	10/06/2005
IMGP2201	25	Interior of shed	JW	10/06/2005
IMGP2202	26	Interior of shed	JW	10/06/2005
IMGP2203	26	Interior of shed	JW	10/06/2005
IMGP2204	27	Interior of shed	JW	10/06/2005
IMGP2205	27	Interior of shed	JW	10/06/2005
IMGP2206	27	Interior of shed	JW	10/06/2005
IMGP2207	27	Interior of shed	JW	10/06/2005
IMGP2208	28	View S	JW	10/06/2005

Photo no.	Camera Location	Notes	Taken by	Date
IMGP2209	28	View S	JW	10/06/2005
IMGP2210	28	View SE	JW	10/06/2005
IMGP2211	28	View NE	JW	10/06/2005
IMGP2212	29	View S	JW	10/06/2005
IMGP2213	29	View S	JW	10/06/2005
IMGP2214	30	View S	JW	10/06/2005
IMGP2215	30	View S	JW	10/06/2005
IMGP2216	Road verge	View E	JW	10/06/2005
IMGP2217	Road verge	View E	JW	10/06/2005
IMGP2218	11	View S from site	JW	10/06/2005

Appendix 2: Highland Council Brief

BASIC PHOTOGRAPHIC RECORD

The requirement is for a site plan and set of record photographs. Please note that to fulfil the planning condition these must be received by the Highland Council Archaeology Unit before site works start.

1. Background

A photographic record should be made before any demolition or alterations take place. This brief specifies what we consider to be the minimum acceptable standard of work; proposals that present a higher standard may be offered and accepted.

The brief sets out objectives, method, monitoring and reporting arrangements. It has been produced by the Highland Council Archaeology Unit, to whom any enquiries should be addressed. No one else has authority to vary its terms.

2. Terms of Reference

This brief is for archaeological recording work required by your planning application and is based on the application documents supplied. It has been produced for the applicant, who is responsible for all aspects of the work, including any tendering and contractual arrangements where a photographer is engaged. It may be used to obtain estimates from suitably qualified photographers.

3. Objectives

To provide a record of any features and objects of archaeological or historical importance which will be altered, damaged or destroyed by this development.

4. Method

A ground plan should be produced of the building or buildings to be altered or demolished. This should include a scale and north point. An architect's or draughtsman's drawing is usually sufficient.

A set of colour photographs (preferably good quality digital images) must be produced to illustrate all features of the building remains. These should include internal and external shots, general views of the site as well as any construction details of the buildings to be demolished or altered, such as windows, doorways, fireplaces, surviving roof details, etc. The photographs must be clearly labelled and numbered, and these numbers marked on the site plan to show which part of the building each photograph represents.

A short (typed or word-processed) note should accompany the above, to include the name of those who made the record (for copyright purposes), any descriptions or explanations necessary, and brief comments on the date and circumstances of the work.

5. Reporting

One copy of the plan, photographs and notes should be sent to the Archaeology Unit, Planning and Development Service, Council Offices, Glenurquhart Road, Inverness P13 5NX. If digital images are supplied these should be photographic quality JPEGs on floppy disks or CDROMs. This should be received before the start of demolition or construction works. Please telephone 01463 702250 to confirm receipt.

The Archaeology Unit will assume author's copyright unless advised otherwise. The completed report will be available for immediate public consultation at the Highland Sites and Monuments Record. The Archaeology Unit reserves the right to make it available for reference and research purposes, either on paper, or electronically. The Archaeology Unit will acknowledge copyright in all cases.

6. Finds

If you find anything of possible historic or archaeological interest, of any type or period, the items should be kept aside and notified immediately to the Archaeology Unit. Scottish Treasure Trove Laws may apply. This means that any items found, whether precious or not, must be reported for consideration by the Treasure Trove Panel. It is a criminal offence not to report items, but where items are promptly and correctly reported, and are claimed by the Crown as Treasure Trove, a reward may be paid to the finder.