

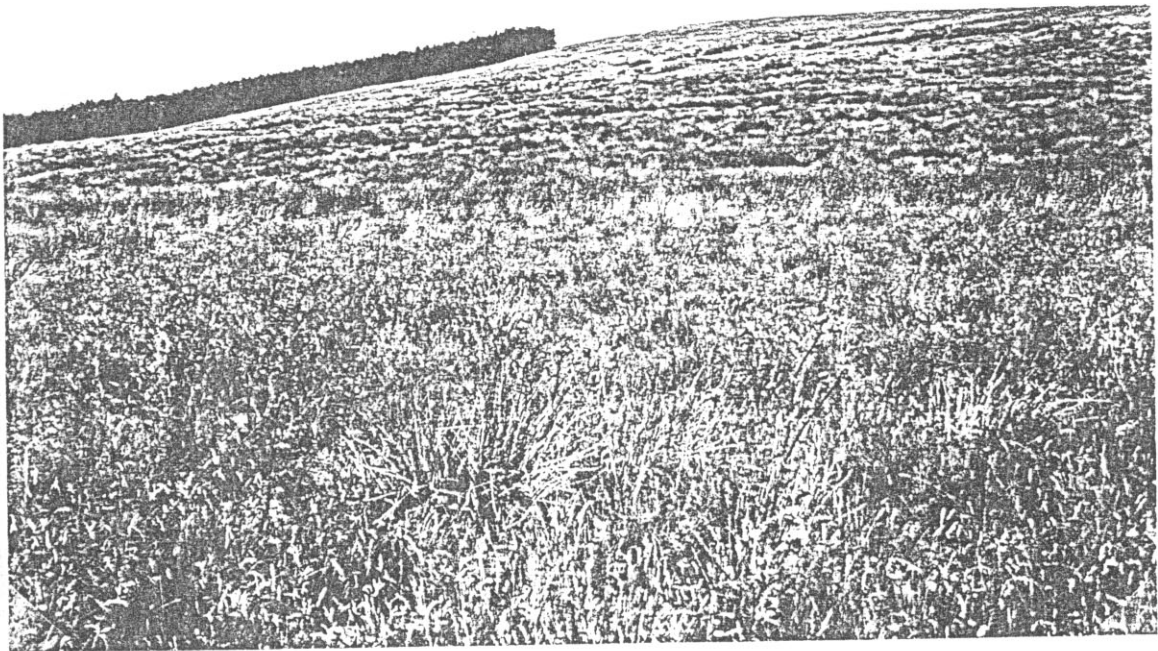
from

6. The results of the survey

6.1 Area 1 [Illustration 2]

1. *Scheduled Ancient Monument [NC51NW002-NC51NE001] [Appendix 1]*
The scheduled ancient monument covers c14 hectares of the SW slope of Cnoc Olasdail. The area has been repeatedly surveyed over the past 30 years and, depending on the time of year and therefore the state of the vegetation, various features have been recorded.

Illustration 3: General view to NNE across the scheduled area



Within the scheduled area there are the remains of at least 6 prehistoric round-houses [NMRS NC51NW002 A, C-G = EU DAL 15, 21?-22, 24-25] defined by earthen banks, with an extensive area of associated clearance cairns mainly to the E of the structures [NMRS NC51NW002 = EU DAL 16, 20, 23, 42-44 & 44d]. The landscape is 'confused' by more recent agricultural activity across the area, with short lengths of presumably post-medieval turf and earth banks and mounds surviving [EU DAL 17-19, 21, 30-31]. In the recent past the ground seems to have been 'improved' by re-seeding with grasses and clover, but today it is overgrown with rank reeds.

The whole of the scheduled area should be removed from the afforestation proposal.