

Wade's Road Slochd to Invereen

- David Bonniface

Signposted from Slochd summit by the Scottish Rights of Way Society the line of Wade's Road is easily followed on later hill tracks until near the old settlement of Braenerich where it takes a lower route through marshy ground before rejoining the modern track near Raigbeg. The section from Slochd is of interest as it clearly demonstrates the survey method of following line of sight from view point to view point (very much the way of the Roman roads). Hence the long straight undulating sections with occasional deviations. Indeed at times the road follows a "beeline" as if to go directly across Loch Moy to the Moray Firth. In reality from Invereen the road follows a new line, West of Moy, heading for the first Fort George.

The original ford and later bridge over the Findhorn (near the current rail viaduct) appear to have been totally obliterated but the line from the driveway to Tomatin House up to Prince Charles's Stone is obvious but overgrown. The road beyond is dramatically broken by the new A9 which cuts through very close to its viaduct over the Findhorn. From the west of the A9 the road proceeds behind Smithy Cottage to the "old A9" near Mo Dhachaidh.

The Road soon leaves the old A9 at the lodge gates following a dyke to the crossing of the Allt na Frithe beyond the new A9. Some stonework of the ruined bridge remains and the line of the road is clear rising onto the river terrace and crossing the meadow, with the site of the Freeburn Hotel [and old Little Chef!] to the west across the new road and the R. Findhorn to the east. It is then lost in the plantation beyond. It can next be seen leaving the grounds of Tigh an Allt as it rises to Invereen.

2010.

Military Road Photographs

Slochd Summit to Raigbeg



NH835256



NH836257 (to NW)



NH 836257 (to SE)



NH 828268 (to NW)



NH 823 275 (to NW)



View towards Moy

Military Road Photographs

Raigbeg to Freeburn (Allt na Frithe)



NH 809293 (to E)



NH 808294 (to E)



NH 808294 (to W)



NH 800295 (to ESE)



NH 798299 (to SE)



NH 797301

Military Road Photographs

Allt na Frithe to Invereen



NH 796300 (to NW)



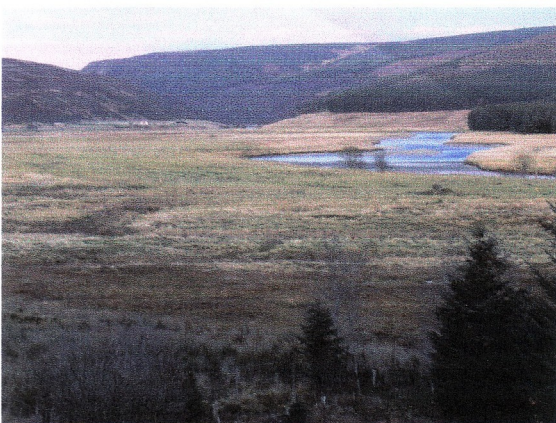
NH 796301 (to SE)



NH 795302



NH 797309 (to S)



View from Wade Road at Invereen to NE



NH 797309 (to N)