

**Historic Scotland  
Properties in Care  
Minor Archaeological Works 2010**

# **Fort George: Coastal Erosion Recording May 2010**

**HS PIC Index Number: 90146  
Project Code: HSCO-90146-2010-02**



**4<sup>th</sup> May 2010  
Kirkdale Archaeology**

<b><u>Site</u></b>	Fort George, Ardersier Point
<b><u>N.G.R</u></b>	NH 76079 56674
<b><u>Project Description</u></b>	Recording of exposed and eroding midden above the foreshore, on the N side of Fort George.
<b><u>Project Code</u></b>	HSCO-90146-2010-02

## **Contents**

1.0	Introduction	1
2.0	Description and Interpretation	1
3.0	Conclusions and Recommendations	8
4.0	Appendix 1: List of Contexts	9
5.0	Appendix 2: List of Digital Photographs	11
6.0	Appendix 3: List of Small Finds	14
7.0	Appendix 4: List of Samples	16

## 1.0 INTRODUCTION

Under the terms of its PIC call-off contract with Historic Scotland, Kirkdale Archaeology was asked to make an archaeological record of part of the coast above the foreshore to the N of Fort George. This had been subject to severe erosion from wave action with the result that a series of contexts of suspected archaeological significance had been exposed.

The work was carried out on 4th May 2010.

## 2.0 DESCRIPTION AND INTERPRETATION

The areas that were recorded (henceforth referred to as middens) were located between Prince Henry Frederick's Bastion to the W, and the Duke of Cumberland's Battery to the E. Recording was done using *pro forma* context sheets accompanied by extensive digital photography. A full description of the photographs taken can be found in Appendix 6.

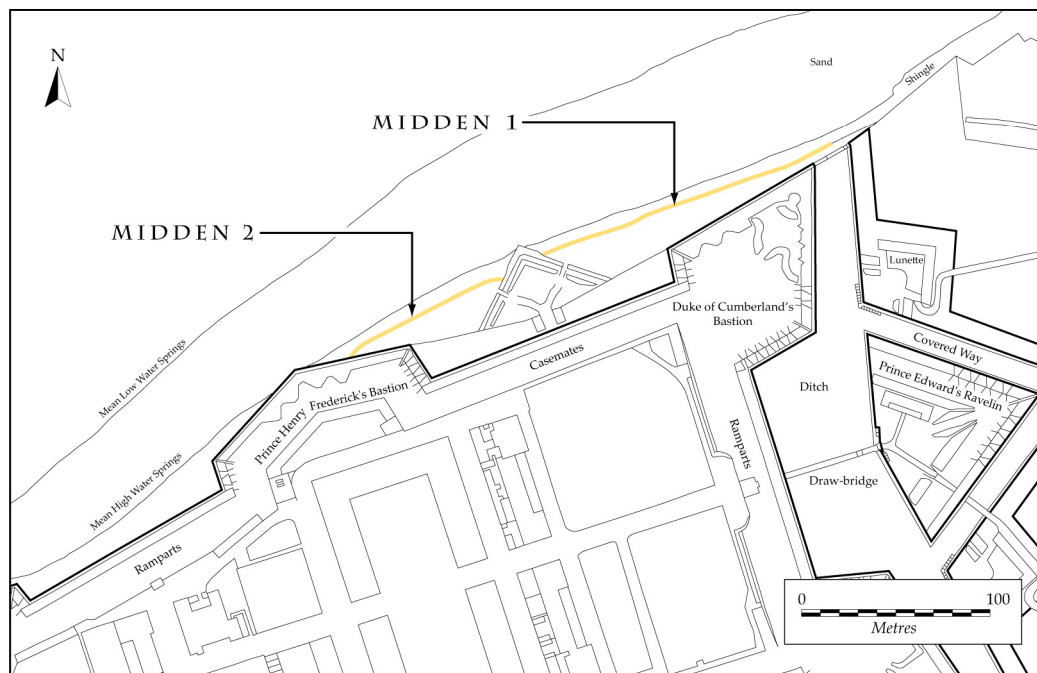


Figure 1: Location map of eroding middens

Midden 1, to the E, was approximately 181m in length (E/W), while. Midden 2, to the W, was shorter in overall length, being 93m (E/W) (see Figure 1).

In order to facilitate recording, each of the middens was broken down into zones, and in order to discuss the findings of the fieldwork, each of these zones will be discussed in turn.

## **1.1 MIDDEN 1**

### **1.1.1 ZONE 1**

The topsoil (**100**), a dark grey sand rich silt c.10-12cm deep overlay a yellow-brown sandy silt containing some small pebbles and shell fragments (**101**). The bottom of (**101**) was defined by the cut (**102**) which overlay a >50cm deep deposit of clean sand and pebbles (**103**), which abutted the E wall of the bastion to the W (**104**).

### **1.1.2 ZONE 2**

Beneath the topsoil (**100**) in the E half of this zone appeared a clean lens of windblown sand (**105**) c.2.03m wide and a maximum thickness of c.0.15m. Below this appeared a dark brown sandy silt with brick and mortar inclusions (**106**), that was c.20m wide and varied in thickness to a maximum of c.0.4m. This lay over (**107**), a clean sand containing some rounded pebbles c.4.6m in width and c.0.3m thick.

### **1.1.3 ZONE 3**

The topsoil (**100**) continued across this zone. Immediately beneath it lay a c.13.6m wide by c.0.15m thick deposit (**108**) of dark grey sandy silt containing the occasional

rounded pebble. This lay over a thin (never greater than *c.*5cm thickness) clean layer of windblown sand (109).

#### **1.1.4 ZONE 4**

Again, the topsoil (100) was present across the entire width of this zone (*c.*10.08m). It overlay a layer of brown silty sand (110) which again extended across the entire width of this zone. Below this was a narrow deposit of windblown sand, typically *c.*2-3cm thick (111). Beneath this layer was a *c.*4.5m wide dark brown sandy silt, *c.*1cm thick (112). This in turn overlay a dark brown sandy silt that contained mortar, angular sandstone chunks and occasional rounded pebbles (113). This deposit was a maximum thickness of *c.*18cm (to the E). The final deposit in this zone, immediately beneath (113) was another dark brown sandy silt containing a high percentage (80%) of small rounded cobbles (114). It was *c.*20cm thick and *c.*5.58m wide.

#### **1.1.5 ZONE 5**

Beneath the topsoil (100) appeared a context identical to (110) i.e. a brown silty sand containing rounded cobbles (*c.*20%). This context (115) was a maximum of *c.*25cm thick and *c.*15.3m wide - covering the full width of zones 5 and 6. A thin lens of clean sand (116), *c.*5cm thick at maximum and *c.*14.2m wide, lay beneath (115). Beneath (116) was a thin dark grey sandy silt *c.*5-8cm thick, and *c.*13.55m long, which extended into Zone 6. The final context in this zone, (118), was similar to (114), a dark brown sandy silt containing pebbles. This deposit was *c.*30cm thick and *c.*15.3m wide, again running the full width of Zones 5 and Zone 6.

#### **1.1.6 ZONE 6**

The stratigraphic sequence in this zone was identical to that encountered in Zone 5.

#### **1.1.7 ZONE 7**

Beneath the topsoil (100) appeared a dark grey sandy silt (119) containing small pebbles. This context was typically *c.*10-15cm thick, and *c.*5m wide. Beneath (119) was a *c.*5m wide pale brown silty sand (120), *c.*10cm thick. The final layer in this sequence (121) was identical in nature to (119) and typically *c.*10cm thick.

#### **1.1.8 ZONE 8**

The topsoil (100) continued across this zone and overlay (122), a dark brown silty sand containing pebbles and plant roots. This layer was *c.*15cm thick and *c.*2.5m wide. Beneath (122) appeared a black sandy silt containing occasional rounded pebbles and lots of plant roots (123). This deposit was *c.*8cm thick and *c.*2.5m wide. The final deposit (124) that lay beneath (123) was mostly composed of pebbles and flecks of sandy silt.

#### **1.1.9 ZONE 9**

Beneath the topsoil (100) was a layer *c.*75cm thick and *c.*4.3m wide (125) containing lots of rubble - yellow mortar, pieces of sandstone and handmade brick fragments. Immediately under (125) to the W, where (125) sloped upwards, was a deposit of small and medium sized rounded cobbles (126). This context was *c.*4cm thick and *c.*2.1m wide.

#### **1.1.10 ZONE 10**

This zone contained part of the wall of the fort (128 and 129). Adjacent to this the topsoil (100) terminated abruptly. Immediately beneath this a layer of dark grey sandy silt and pale brown silty sand rich in small rounded stones, some angular sandstone fragments and mortar flecks (127) was present. This was *c.*50cm thick and

*c.*2m wide. Beneath (127) the rubble rich layer (125) was again present, sloping down and becoming less thick to the E.

## **1.2 MIDDEN 2**

### **1.2.1 ZONE 1**

Beneath the upstanding wall (201) a scar (202) from eroded midden was clearly visible. To the W of this a sequence of contexts was clearly defined; the uppermost of which was the topsoil (200). Immediately beneath this was a dark grey silty sand containing a few rounded stones (203). This was *c.*20cm thick and *c.*45cm wide (in Zone 1 - it continued into Zone 2). Beneath (203) was a layer of very dark grey sand and silt (204) that contained rounded stones. It was *c.*20cm thick and *c.*1.9m wide (again, this context extended into Zone 2). The final recorded context (205), lay below (204). It consisted of clean, windblown sand containing some rounded pebbles. It was *c.*35cm thick and *c.*10cm long. It too continued into Zone 2.

### **1.2.2 ZONE 2**

Beneath the topsoil (200) context (203) ran into Zone 2 from the E. Immediately beneath this a layer of clean sand *c.*20cm thick and *c.*6.6m long was present (206). Beneath this (204) reappeared and lay over a black slightly clayey silt rich in charcoal *c.*1.5m wide and up to *c.*10cm thick. Beneath this lay (208), a dark grey silt containing small rounded pebbles, *c.*60-80m thick. (208) was *c.*9.3m wide in this zone and extended into Zone 3. The lowest layer was a continuation of (205).



**Figure 2:** Midden 2, Zone 2.

### **1.2.3 ZONE 3**

The stratigraphic sequence in this zone was composed of contexts already discussed above; the sequence was (in order of depth): topsoil (200) over (206), (204), (208) and (205).

### **1.2.4 ZONE 4**

The topsoil (200) lay immediately over (206) (already discussed). This lay immediately over (209), a pale grey silty sand, *c.*4.5m wide and up to *c.*10cm thick. Below this was context (210), a clean windblown sand, which lay over (204), which in turn lay over (205). Both (204) and (205) have been discussed previously.

### **1.2.5 ZONE 5**

The sequence below the topsoil (200) was identical to the adjacent Zone 4 sequence, i.e. (206), (209) and (210). Immediately below (210) appeared a dark brown sandy silt (213) rich in sandstone flecks *c.*1.1m wide and *c.*8cm thick. Beneath this appeared a *c.*0.7m wide by *c.*5cm thick layer of clean sand (that continued into Zone 6 to the W).



This lay over (the previously discussed) context (204), which in turn lay over (211), a pale grey silty sand containing rounded pebbles. This context extended into Zone 6 to the W and was c.15cm thick and c.3.25m wide in Zone 5. The final layer in the sequence was (212), a dark brown sandy silt containing stone - mostly rounded pebbles but also handmade brick fragments. The context was at least c.15cm thick (only top seen) and c.3.1m wide, and extended into Zone 6 to the W.

### 1.2.6 ZONE 6

Zone 6 was the most stratigraphically complex zone of all those recorded, and it is best visualised by referring to Figure 3 and Appendix 1 (Midden 2).

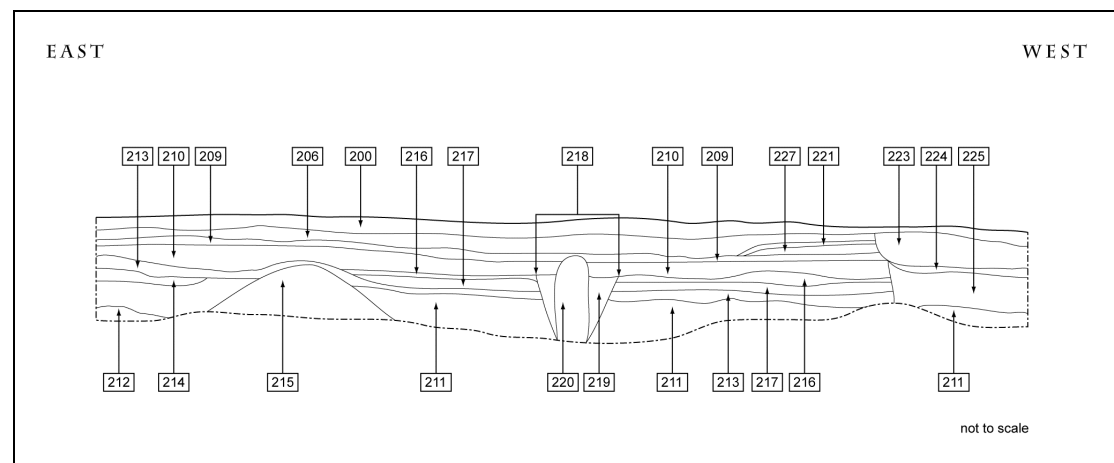


Figure 3: Midden 2, Zone 6 (not to scale).

### 1.2.7 ZONE 7

Beneath the topsoil (200) appeared (226), a layer containing rounded cobbles in a pale brown silty sand matrix. (226) was rich in iron and plastic objects, and was c.14.05m wide and up to c.30cm thick. Beneath (226) appeared a sequence of contexts that have already been the subject of discussion, namely (in stratigraphic sequence) (223), (224), (225) and (211).

### 3.0 CONCLUSIONS AND RECOMMENDATIONS

Most of the contexts that were encountered and recorded were natural in origin, with deposits of windblown sand and beach pebbles predominating.

However, amongst these were contexts with definite anthropogenic origins (e.g. **204**, **226**). Given the proximity of the area of the two middens in relation to Fort George this doesn't come as a surprise, and the possibility of further contexts of archaeological significance existing in the same area is high. Thus, any future ground breaking work in this area should be subject to close archaeological supervision.

However, the biggest threat to archaeologically sensitive contexts in this area is the sea. Wave action has successively scoured the two middens, and it is recommended that these areas are continually monitored - perhaps on an annual basis in the Spring, following the destructive storms and powerful seas that are a characteristic of the winter months in this area.

#### 4.0 APPENDIX 1: LIST OF CONTEXTS

##### MIDDEN 1

No.	Zone	Description
100	1	100-120mm of dark grey sandy silt full of small rounded pebbles and roots. Topsoil.
101	1	c.90% yellowish brown silty sand, 10% dark grey sandy silt, small to medium rounded pebbles throughout. Occasional shells fragments. c.3.9m E/W (continues into Zone 2) and at least 700mm deep. Fills cut 102.
102	1	Cut. Steep E edge, gutters to the W. Filled by 101.
103	1	Clean sand and pebbles. 1.7m E/W, > 500mm deep.
104	1	E wall of Bastion. Upper four courses are large rectangular red/yellow sandstone blocks. Rusticated masonry (recessed flute margin c.50mm and rough); gently sloped, c. 1.8m high. Steps out 65mm just below 100 and continues down for at least three course (650mm high) in similar but slightly smaller blocks to above.
105	2	Clean sand lens, c.2.03m wide, up to c.150mm thick.
106	2	60% dark brown sandy silt, 40% rounded pebbles, some brick and mortar fragments. c.20m long (full length of Zone 3) and varied thickness, up to c.400mm in places. One thin (c.20mm) clean sand lens towards its W end.
107	2	60% clean sand, 40% rounded pebbles. c.4.6m long (runs into Zone 3, not fully exposed) and at least c.300 mm deep.
108	3	Dark grey sandy silt, very occasional rounded pebbles. c.13.6m wide, and c.150mm thick.
109	3	Very thin (always < c.50mm, typically c.20-35mm) clean sand layer.
110	4	80% brown silty sand, 20% rounded cobbles, c.10.08m wide and c.200mm thick.
111	4	Thin (max c.80mm; typically c.20-30mm) layer of clean sand.
112	4	Dark brown sandy silt, c.4.5m wide (same as 113 to E perhaps), up to c.10mm thick.
113	4	60% dark brown sandy silt, 40% mortar and angular sandstone chunks, occasional rounded pebbles. Thickest to E, up to c.180mm thick.
114	5/6	80% rounded cobbles, 20% dark brown sandy silt. c.200mm thick and c.5.58m long.
115	5/6	Same as 110, up to c.250mm thick and c. 15.3m long (runs full length of Zones 5 and 6).
116	5/6	Thin sand lens, less than c.50mm thick. Same as 111 perhaps. c.14.2m wide (runs into Zone 6).
117	5/6	Thin (c.50-80mm wide) dark grey sandy silt. Same as 112 perhaps. c.13.55m wide (runs into Zone 6).
118	5/6	Same as 114, c.300mm thick and c.15.3m wide (runs full length of Zones 5 and 6).
119	7	70% dark grey sandy silt, 30% small rounded pebbles. c.5m wide and c.100-150mm thick.
120	7	Pale brown silty sand. c.5m wide and c.100mm thick.
121	7	Same as 119, c.100mm thick.
122	8	70% dark brown silty sand, 30% rounded pebbles, many plant roots. c.2.5m wide and c.150mm thick.

No.	Zone	Description
123	8	Black sandy silt, occasional rounded pebbles, many plant roots. c.2.5m wide and c.80mm thick.
124	8	80% rounded pebbles, 20% flecks sandy silt, many plant roots. c.2.5m wide and c.400mm thick.
125	9	90% rubble, a lot of fine pale yellow mortar, sandstone (red, purple and yellow) and handmade brick fragments. Intact bricks typically measure 220mm long, 100mm high and 50mm thick. 10% brown-dark grey sandy silt. Context is c.4.3m wide (runs into Zone 10) and c.750mm thick. Located only c.1m N of nearby wall. Deposit slopes down to the E.
126	9	70% small-medium rounded cobbles, 30% dark grey sandy silt. c. 2.1m wide, and 40mm thick.
127	10	Mix of dark grey sandy silt and pale brown silty sand, rich in small rounded stones, with some angular sandstone fragments and mortar flecks throughout. c.2m wide and up to c.500mm thick.
128	10	Same as 129 but cleaner - reddish purple in colour of stones and pale yellow of mortar visible. c.1.1m high, c.5.5m long at its top; slopes off at the E end so the base is c.6.3m long.
129	10	Wall of Fort. Roughly coursed blocks of rectangular stone with frequent small sandstone pinners. 'Typical' blocks were 650mm x 250mm in size, but there was much variation.

## MIDDEN 2

No.	Zone*	Description
200	1	See 100
201	1	Upstanding Wall
202	1	Scar from midden- fresher than 201. Up to 1.4m high, 5.1m long at its top, 6.3m at its base.
203	1	Dark grey silty sand, few rounded stones, few finds. 200mm thick (runs into Zone 2, 450mm long in Zone 1).
204	1	70% very dark grey sand silt, 30% rounded stone, much finds. 200mm thick, 1.9m long (in Zone 1)
205	1	70% clean sand, 30% rounded pebbles, 350mm thick, 100mm long (in Zone 1)
206	2	Clean sand. Same as 203 but cleaner. 6.6m long in this Zone, 200mm thick.
207	2	Black slightly clayey silt rich in charcoal. 1.5m long, up to 100mm thick
208	2	60% dark grey silt, 40% very small (c. 40mm) rounded pebbles. 60-80cm thick by 9.8m wide (in this Zone).
209	4	Pale grey silty sand, 4.5m long, 100mm (or <) thick.
210	4	Clean Sand
211	5	70% pale grey silty sand, 30% rounded pebbles. Up to 150mm thick, 3.25 long.
212	5	60% dark brown sand silt, 40% stone- mostly rounded pebbles but much handmade rick 150(+)mm thick (only top seen), 3.1m long.
213	5	Dark brown sand silt rich in sandstone, flecks. 1.1m long, 80mm thick.
214	5	Clean Sand. 700mm long, 50mm thick.

No.	Zone*	Description
215	6	60% pale grey sandy silt, 40% sandstone rubble (reddish purple and yellow) with mortar attached and mortar flecks. 350(+) mm high.
216	6	Thin (c. 50mm) dark grey silty sand.
217	6	Thin (c. 50mm) clean sand.
218	6	750mm wide at top, 650mm at base, 750(+)mm deep, steep sided cut.
219	6	60% dark brown sandy silt, 40% rounded pebbles
220	6	Circular post 230 diameter, 950(+)mm high. Some bark on outer surface. Cut down on top?
221	6	Thin (c. 50mm) dark grey silty sand.
222	6	Thin (c. 50mm) clean sand.
223	6	Clean sand, 350mm thick.
224	6	80% clean sand, 20% very small (<2mm) rounded pebbles. Up to 150mm thick. Typically 50mm.
225	6	Clean sand, 550mm thick.
226	7	60% rounded cobbles, 40% pale brown silty sand, rich in iron objects and plastic. Up to 300mm thick.

## 5.0 APPENDIX 2: LIST OF DIGITAL PHOTOGRAPHS

### NE PLATFORM

No.	Area	Description	From	Date
1	Midden 1	General shot W end of Midden 1	NW	04/05/2010
2	Midden 1	General shot of Midden 1	N	04/05/2010
3	Midden 1	General working shot	N	04/05/2010
4	Midden 1	General working shot	NE	04/05/2010
5	Midden 1	General shot of W end of Midden 1	NE	04/05/2010
6	Midden 1	General shot of Midden 1	NE	04/05/2010
7	Midden 1	General shot of Midden 1	N	04/05/2010
8	Midden 1	General shot of Midden 1	E	04/05/2010
9	Midden 1	General shot of Midden 1	E	04/05/2010
10	Midden 1	General shot W end of Midden 1	E	04/05/2010
11	Midden 1	General shot of Midden 1	W	04/05/2010
12	Midden 2	General shot of Midden 2	E	04/05/2010
13	Midden 2	General shot of Midden 2	E	04/05/2010
14	Midden 2	General shot E End of Midden 2	N	04/05/2010
15	Midden 2	General shot of Midden 2	E	04/05/2010
16	Midden 2	General shot W side of Dog Cemetery Bastion	W	04/05/2010
17	Midden 2	General shot E end of Midden 2	W	04/05/2010
18	Midden 2	General shot E end of Midden 2	W	04/05/2010
19	Midden 2	General shot	NE	04/05/2010

No.	Area	Description	From	Date
20	Midden 2	General shot of post (220) in Midden 2	N	04/05/2010
21	Midden 2	General shot of Dog Cemetery Bastion	N	04/05/2010
22	Midden 1	Midden 1, Zone 1	N	04/05/2010
23	Midden 1	Midden 1, Zone 2, W end	N	04/05/2010
24	Midden 1	Midden 1, Zone 2, to E of No.23	N	04/05/2010
25	Midden 1	Midden 1, Zone 2, to E of No.24	N	04/05/2010
26	Midden 1	Midden 1, Zone 2, E end	N	04/05/2010
27	Midden 1	General view of DUKW platform	E	04/05/2010
28	Midden 1	General view of DUKW platform	S	05/05/2010
29	Midden 1	General view of DUKW platform	SW	05/05/2010
30	Midden 1	General view of S side of Fort	E	05/05/2010
31	Midden 1	General view of Midden 1	NE	05/05/2010
32	Midden 1	General view of DUKW platform	W	05/05/2010
33	Midden 1	General view of DUKW platform	SW	05/05/2010
34	Midden 1	General view of Midden 1	E	05/05/2010
35	Midden 1	DUKW platform against Fort Wall	N	05/05/2010
36	Midden 1	DUKW platform against Fort Wall	N	05/05/2010
37	Midden 1	Section across DUKW platform	E	05/05/2010
38	Midden 1	Detail of shot No. 37	E	05/05/2010
39	Midden 1	Midden 1, Zone 3, W end	N	05/05/2010
40	Midden 1	Midden 1, Zone 3, from W-E	N	05/05/2010
41	Midden 1	Midden 1, Zone 3, from W-E	N	05/05/2010
42	Midden 1	Midden 1, Zone 3, from W-E	N	05/05/2010
43	Midden 1	Midden 1, Zone 3, from W-E	N	05/05/2010
44	Midden 1	Midden 1, Zone 3, from W-E	N	05/05/2010
45	Midden 1	Midden 1, Zone 3, from W-E	N	05/05/2010
46	Midden 1	Midden 1, Zone 3, from W-E	N	05/05/2010
47	Midden 1	Midden 1, Zone 4, from W-E	N	05/05/2010
48	Midden 1	Midden 1, Zone 4, from W-E	N	05/05/2010
49	Midden 1	Midden 1, Zone 4, from W-E	N	05/05/2010
50	Midden 1	Midden 1, Zone 4, from W-E	N	05/05/2010
51	Midden 1	Midden 1, Zone 4, from W-E	N	05/05/2010
52	Midden 1	Midden 1, Zone 5, from W-E	N	05/05/2010
53	Midden 1	Midden 1, Zone 5, from W-E	N	05/05/2010
54	Midden 1	Midden 1, Zone 5, from W-E	N	05/05/2010
55	Midden 1	Midden 1, Zone 5, from W-E	N	05/05/2010
56	Midden 1	Midden 1, Zone 5, from W-E	N	05/05/2010
57	Midden 1	Midden 1, Zone 5, from W-E	N	05/05/2010
58	Midden 1	Midden 1, Zone 6, from W-E	N	05/05/2010
59	Midden 1	Midden 1, Zone 6, from W-E	N	05/05/2010
60	Midden 1	Midden 1, Zone 7, from W-E	N	05/05/2010
61	Midden 1	Midden 1, Zone 7, from W-E	N	05/05/2010

No.	Area	Description	From	Date
62	Midden 1	Midden 1, Zone 7, from W-E	N	05/05/2010
63	Midden 1	General shot, E end of S wall of Fort	W	05/05/2010
64	Midden 1	General shot, DUKW platform being planned	W	05/05/2010
65	Midden 1	Midden 1, Zone 8, From W-E	N	06/05/2010
66	Midden 1	Midden 1, Zone 8, From W-E	N	06/05/2010
67	Midden 1	Midden 1, Zone 9, From W-E	N	06/05/2010
68	Midden 1	Midden 1, Zone 9, From W-E	N	06/05/2010
69	Midden 1	Midden 1, Zone 10, From W-E	N	06/05/2010
70	Midden 1	Midden 1, Zone 10, From W-E	N	06/05/2010
71	Midden 1	Midden 1, Zone 9, detail of 125	N	06/05/2010
72	Midden 1	Midden 1, General shot of Zone 10	NW	06/05/2010
73	Midden 1	Midden 1, General shot of Zone 9 and 10	N	06/05/2010
74	Midden 2	Midden 2, Zone 1, SW end	NW	06/05/2010
75	Midden 2	Midden 2, Zone 1, NE end	NW	06/05/2010
76	Midden 2	Midden 2, Zone 1, general shot	N	06/05/2010
77	Midden 2	Midden 2, Zone 2, from E-W	N	06/05/2010
78	Midden 2	Midden 2, Zone 2, from E-W	N	06/05/2010
79	Midden 2	Midden 2, Zone 2, from E-W	N	06/05/2010
80	Midden 2	Midden 2, Zone 2, from E-W	N	06/05/2010
81	Midden 2	Midden 2, Zone 2, from E-W	N	06/05/2010
82	Midden 2	Midden 2, Zone 2, from E-W	N	06/05/2010
83	Midden 2	Midden 2, General shot	E	06/05/2010
84	Midden 2	Midden 2, Zone 3, from E-W	N	06/05/2010
85	Midden 2	Midden 2, Zone 3, from E-W	N	06/05/2010
86	Midden 2	Midden 2, Zone 4, from E-W	N	06/05/2010
87	Midden 2	Midden 2, Zone 4, from E-W	N	06/05/2010
88	Midden 2	Midden 2, Zone 4, from E-W	N	06/05/2010
89	Midden 2	Midden 2, Zone 4, from E-W	N	06/05/2010
90	Midden 2	Midden 2, Zone 5, from E-W	N	06/05/2010
91	Midden 2	Midden 2, Zone 5, from E-W	N	06/05/2010
92	Midden 2	Midden 2, Zone 5, from E-W	N	06/05/2010
93	Midden 2	Midden 2, Zone 6, from E-W	N	07/05/2010
94	Midden 2	Midden 2, Zone 6, from E-W	N	07/05/2010
95	Midden 2	Midden 2, Zone 6, from E-W	N	07/05/2010
96	Midden 2	Midden 2, Zone 6, from E-W	N	07/05/2010
97	Midden 2	Midden 2, Zone 6, from E-W	N	07/05/2010
98	Midden 2	Midden 2, Zone 6, from E-W	N	07/05/2010
99	Midden 2	Midden 2, Zone 6, from E-W	N	07/05/2010
100	Midden 2	Midden 2, Zone 6, from E-W	N	07/05/2010
101	Midden 2	Midden 2, Zone 6, from E-W	N	07/05/2010
102	Midden 2	Midden 2, Zone 6, from E-W	N	07/05/2010
103	Midden 2	Midden 2, Zone 6, from E-W	N	07/05/2010

No.	Area	Description	From	Date
104	Midden 2	Midden 2, Zone 6, from E-W	N	07/05/2010
105	Midden 2	Midden 2, Zone 6, from E-W	N	07/05/2010
106	Midden 2	Midden 2, Zone 6, from E-W	N	07/05/2010
107	Midden 2	Midden 2, Zone 6, from E-W	N	07/05/2010
108	Midden 2	Midden 2, Zone 6, from E-W	N	07/05/2010
109	Midden 2	Midden 2, Zone 6, from E-W	N	07/05/2010
110	Midden 2	Midden 2, Zone 7, from E-W	N	07/05/2010
111	Midden 2	Midden 2, Zone 7, from E-W	N	07/05/2010
112	Midden 2	Midden 2, Zone 7, from E-W	N	07/05/2010
113	Midden 2	Midden 2, Zone 7, from E-W	N	07/05/2010
114	Midden 2	Midden 2, Zone 7, from E-W	N	07/05/2010
115	Midden 2	Midden 2, Zone 7, from E-W	N	07/05/2010
116	Midden 2	Midden 2, Zone 7, from E-W	N	07/05/2010
117	Midden 2	Midden 2, Zone 7, from E-W	N	07/05/2010
118	Midden 2	Midden 2, Zone 7, from E-W	N	07/05/2010
119	Midden 2	Midden 2, Zone 7, from E-W	N	07/05/2010
120	Midden 2	Midden 2, Zone 7, from E-W	N	07/05/2010
121	Midden 2	Midden 2, Zone 7, from E-W	N	07/05/2010

## 6.0 APPENDIX 3: LIST OF SMALL FINDS

No.	Area	Context	Description
1	M1, Z6	113	Two sherds from a stoneware jar. Grey glaze inside and out, with incised decoration. 19 <sup>th</sup> C.
2	M2, Z3	Unstratified	Fragment of a white glazed plate.
3	M2, Z3	Unstratified	Iron nail
4	M2, Z3	Unstratified	One fragment of clear vessel glass
5	M1, Z7	Unstratified	One fragment of a white plate, 19 <sup>th</sup> C/Modern.
6	M1, Z7	Unstratified	One fragment of green vessel glass.
7	M1, Z9	125	One small handmade brick fragment 18 <sup>th</sup> /19 <sup>th</sup> C.
8	M1, Z9	125	One complete handmade brick, 22cm long x 10cm wide x 5cm thick; very distorted – possibly heat affected, perhaps from the kiln or furnace etc. Grey gritty mortar adhering to all but one side.
9	M1, Z3	106	One basal sherd from a jug of reddish/brown earthenware, with a brown external glaze and pale yellow glaze inside. 19 <sup>th</sup> /20 <sup>th</sup> C.
10	M1, Z3	106	One fragment of strap handle, with a dark brown glaze. Possibly from a teapot. 19 <sup>th</sup> /20 <sup>th</sup> C.
11	M1, Z3	106	One fragment of unglazed pantile. 19 <sup>th</sup> /20 <sup>th</sup> C.



No.	Area	Context	Description
12	M1, Z2	Unstratified	One fragment of unglazed pantile. Late 19 <sup>th</sup> C. to Early 20 <sup>th</sup> C.
13	M1, Z2	Unstratified	Three fragments from a plant pot. Late 19 <sup>th</sup> C. to Early 20 <sup>th</sup> C.
14	M1, Z2	Unstratified	Five sherds of white glazed tableware from a plate or saucer. Late 19 <sup>th</sup> C. to Early 20 <sup>th</sup> C.
15	M1, Z2	Unstratified	Basel fragment of a jar with pale grey glaze; stoneware fabric. Late 19 <sup>th</sup> C. to Early 20 <sup>th</sup> C.
16	M1, Z2	Unstratified	Lid from a jar, circular, with an incised line and the words "Pan Yan". Late 19 <sup>th</sup> C. to Early 20 <sup>th</sup> C.
17	M1, Z2	Unstratified	One fragment of clear window glass. Late 19 <sup>th</sup> C. to Early 20 <sup>th</sup> C.
18	M1, Z2	Unstratified	One base from a green wine bottle. Late 19 <sup>th</sup> C. to Early 20 <sup>th</sup> C.
19	M1, Z2	Unstratified	One body sherd from a wine bottle. Late 19 <sup>th</sup> C. to Early 20 <sup>th</sup> C.
20	M2, Z4	Unstratified	Twenty-five miscellaneous sherds of cream glazed tableware. Probably 19 <sup>th</sup> C.
21	M2, Z4	Unstratified	Four sherds of a flask or mug; cream glaze featuring a linear pattern. Probably 19 <sup>th</sup> C.
22	M2, Z4	Unstratified	One rim-sherd of a large planter or cooking pot. Pale yellow glaze over a reddish earthenware fabric. Probably 19 <sup>th</sup> C.
23	M2, Z4	Unstratified	One sherd of similar vessel to above (No.22); possibly associated. Probably 19 <sup>th</sup> C.
24	M2, Z4	Unstratified	Four miscellaneous crockery sherds. Probably 19 <sup>th</sup> C.
25	M2, Z4	Unstratified	Four fragments of transfer-ware from a teacup; blue design with figures and pastoral scenes. Probably 19 <sup>th</sup> C.
26	M2, Z4	Unstratified	One fragment of a clear jar. Probably 19 <sup>th</sup> C.
27	M2, Z4	Unstratified	One fragment of a base of a green bottle. Probably 19 <sup>th</sup> C.
28	M2, Z4	Unstratified	Two fragments of animal bone (discarded). Probably 19 <sup>th</sup> C.
29	M2, Z2	Unstratified	Two sherds of white glazed tableware. Probably early 20 <sup>th</sup> C.
30	M2, Z2	Unstratified	Two fragments of a green patterned plate. Probably early 20 <sup>th</sup> C.
31	M2, Z2	Unstratified	One sherd of a stoneware jar. Probably early 20 <sup>th</sup> C.
32	M2, Z2	Unstratified	Top and shoulder (plus stopper) from a clear glass bottle. Probably early 20 <sup>th</sup> C.
33	M2, Z2	Unstratified	Three miscellaneous sherds from a clear bottle glass.

No.	Area	Context	Description
			Probably early 20 <sup>th</sup> C.
34	M2,Z2	Unstratified	One green bottle fragment; the bottle held mineral water. Probably early 20 <sup>th</sup> C.
35	M2,Z2	Unstratified	Two fragments of animal bone (discarded). Probably early 20 <sup>th</sup> C.

## 7.0 APPENDIX 4: LIST OF SAMPLES

No.	Area	Context	Sample type
1	Z1, M2	204	Bulk (three bags)