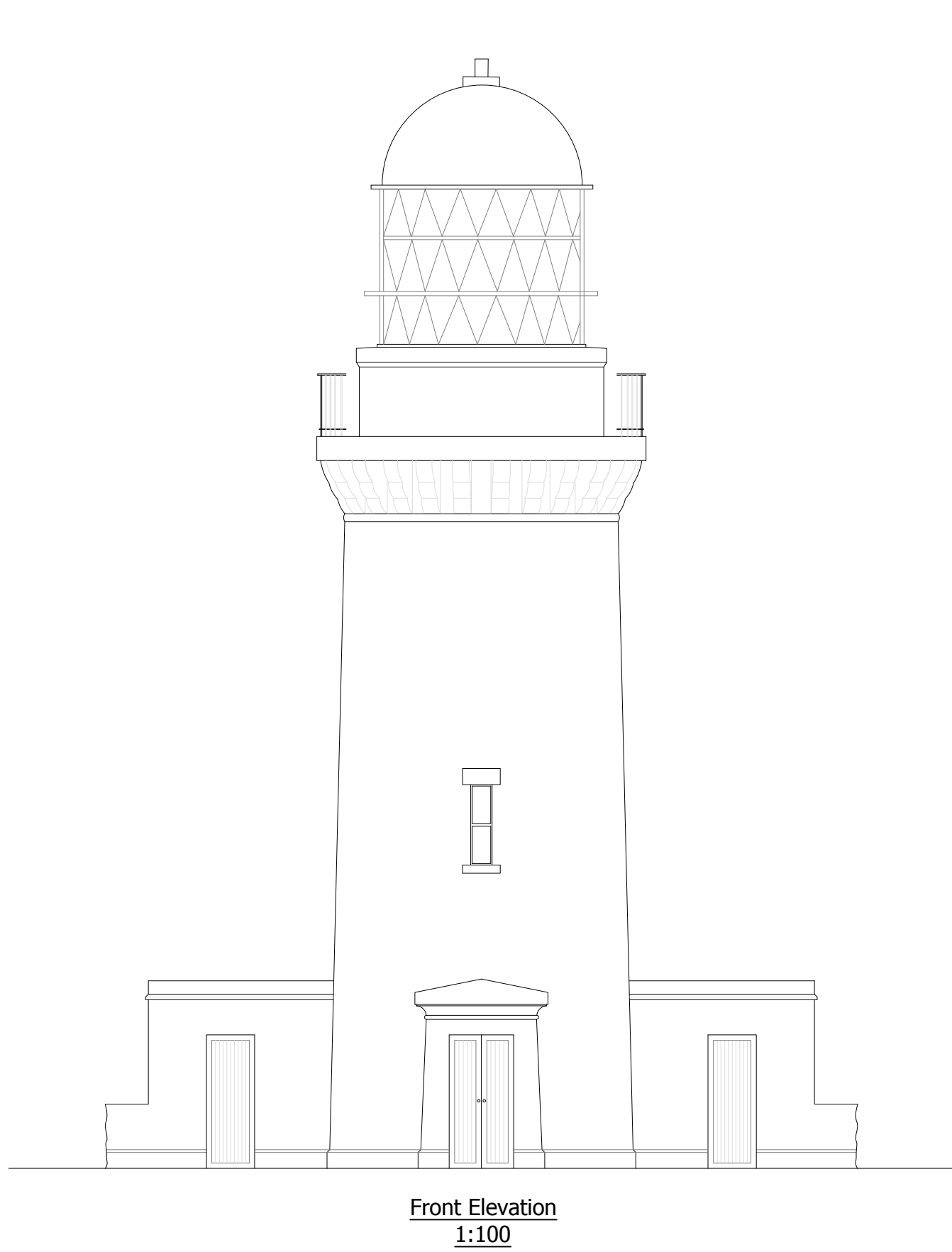


Notes: -
Please read in conjunction with Basic Photographic Record dated August 2017.

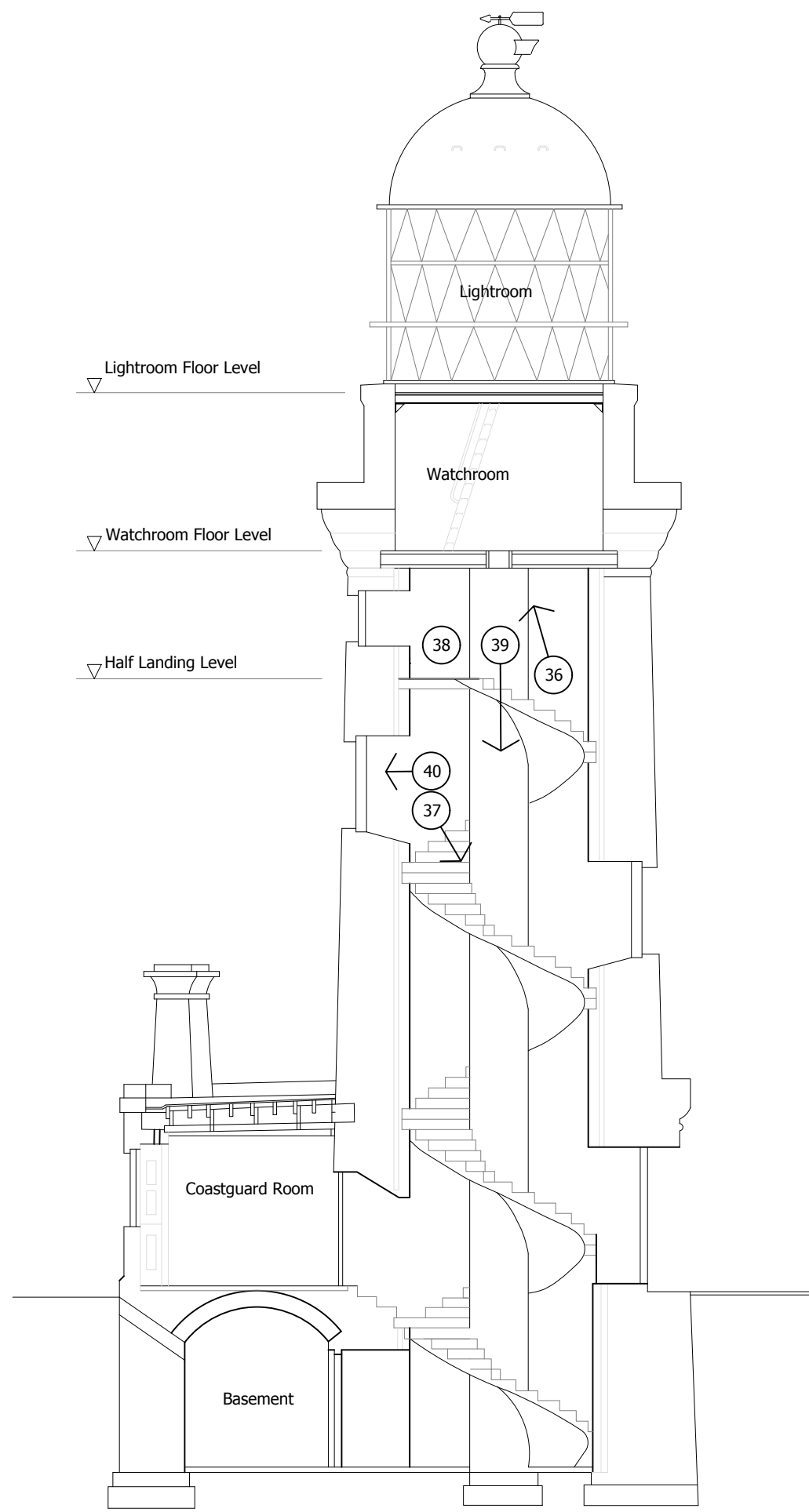
Rev.	Date	Description	By	Ap'd
NORTHERN LIGHTHOUSE BOARD ENGINEERS DEPARTMENT 84, GEORGE STREET EDINBURGH EH2 3DA Tel : 0131 - 473 3100 Fax : 0131 - 220 2093 E-mail : enquiries@nlb.org.uk Website : http://www.nlb.org.uk				



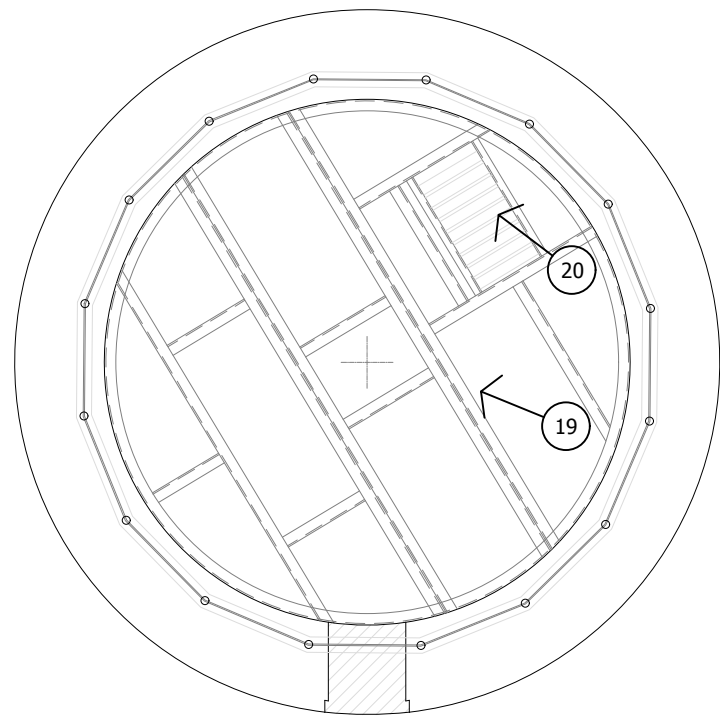
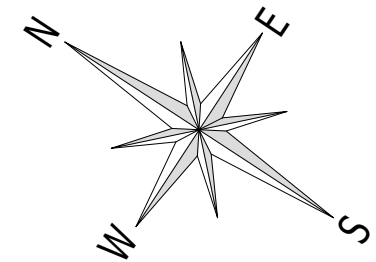
Station Name Noss Head Lighthouse (3544)				
Drawing Title Listed Build Consent - Photographic Record Building Arrangements				
Date August '17	Scale As Shown	Engineer S. Dickson		
Drawn G. Doctor	Checked	Approved		
Drawing Number C-NOS-094				Rev.



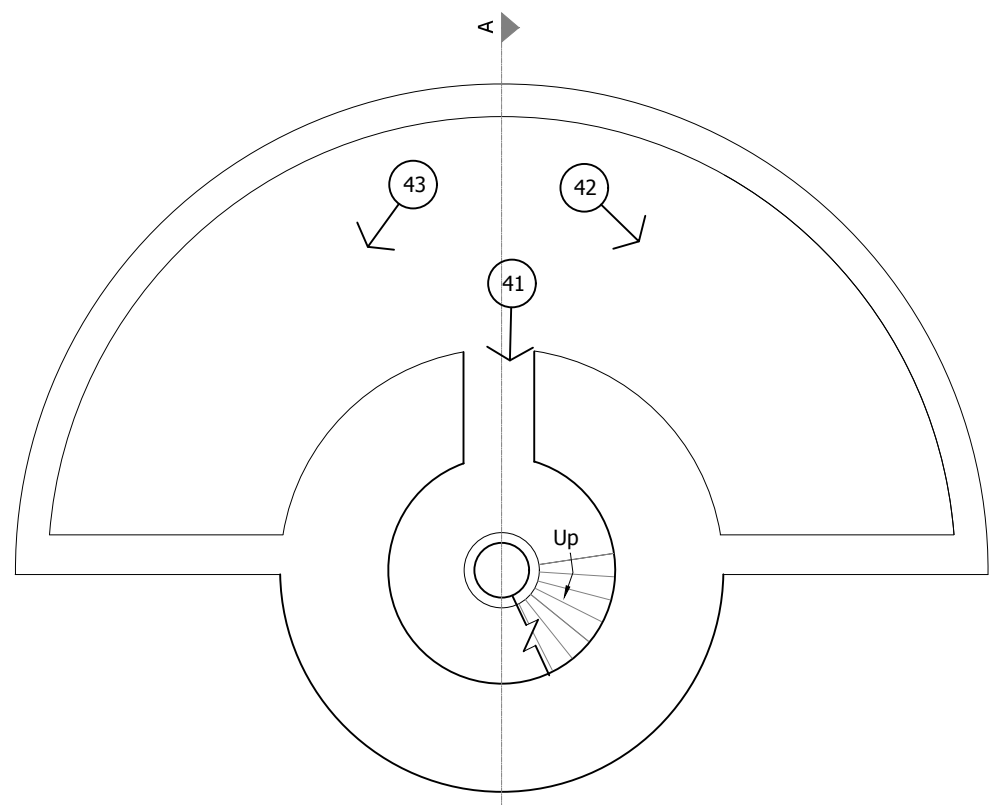
Front Elevation
1:100



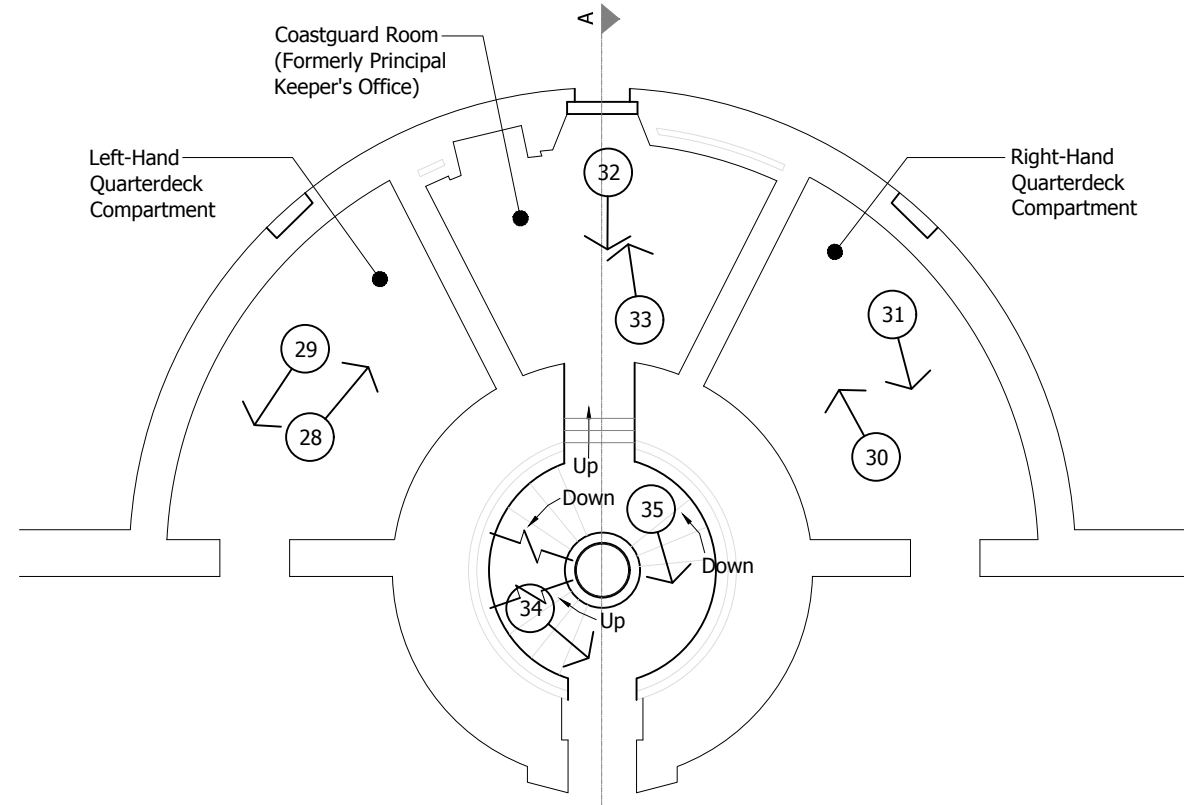
Section A-A
1:100



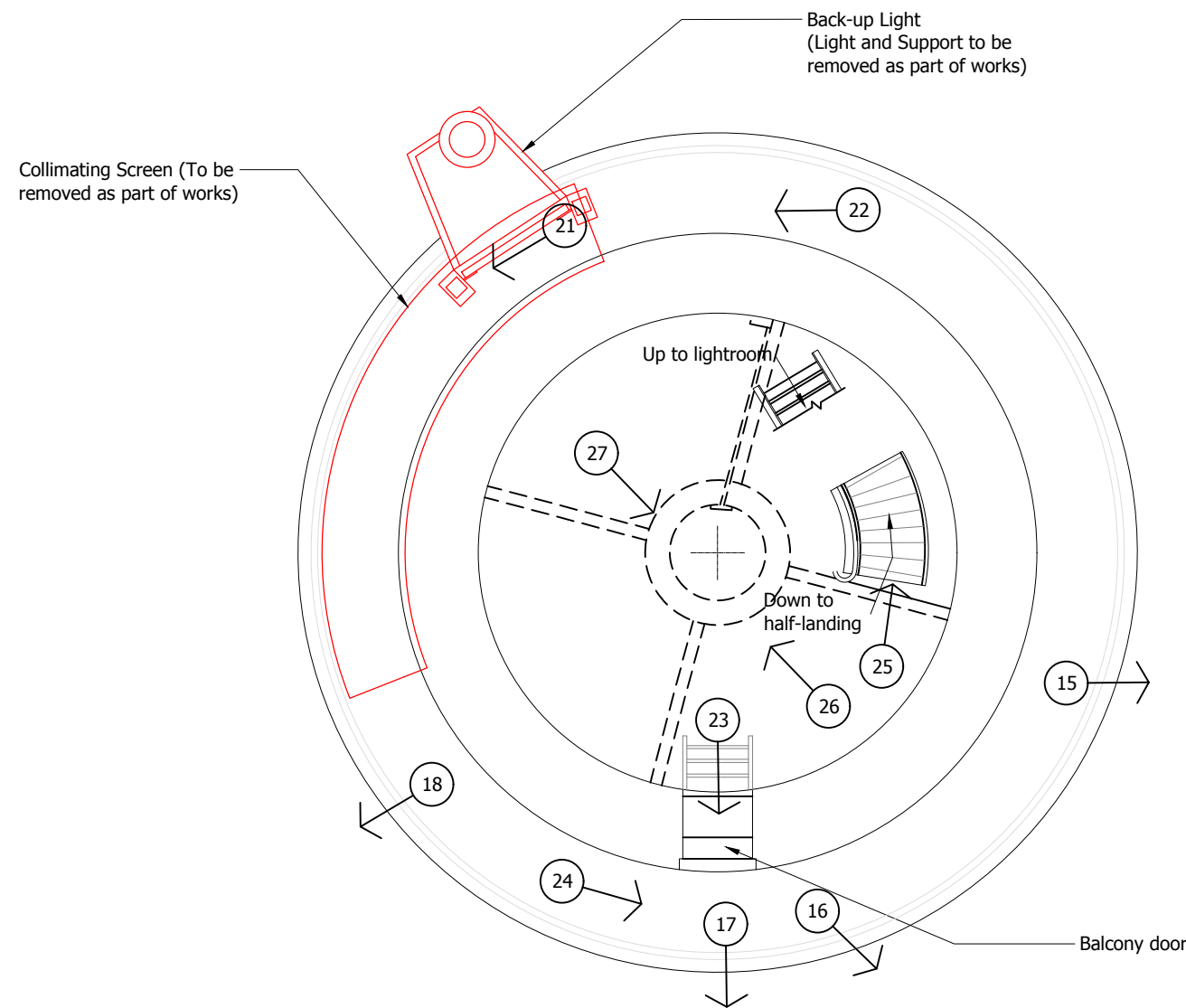
Lightroom Floor Plan (Showing Layout of Floor Beams)
1:50



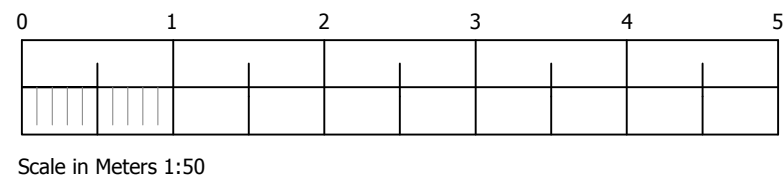
Basement Floor Plan
1:100



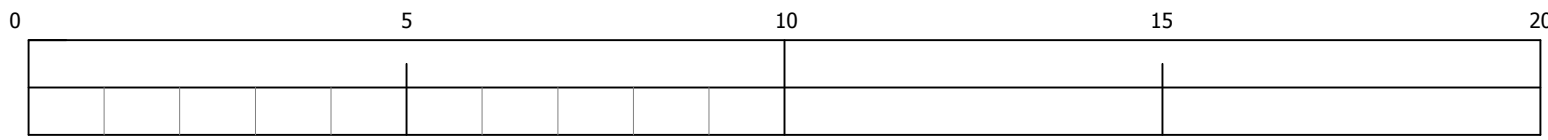
Ground Floor Plan
1:100



Watchroom Floor Plan
1:50



Scale in Meters 1:50



1:100 Scale in Meters