

Report of Archaeological Watching Brief
June 26th – 27th 2001 & December 18th 2001
Camusaine by Strontian, Highland
NM 7566 / 6127

By
Stuart Farrell
B.A A.I.F.A F.S.A.Scot.
December 2001

Introduction

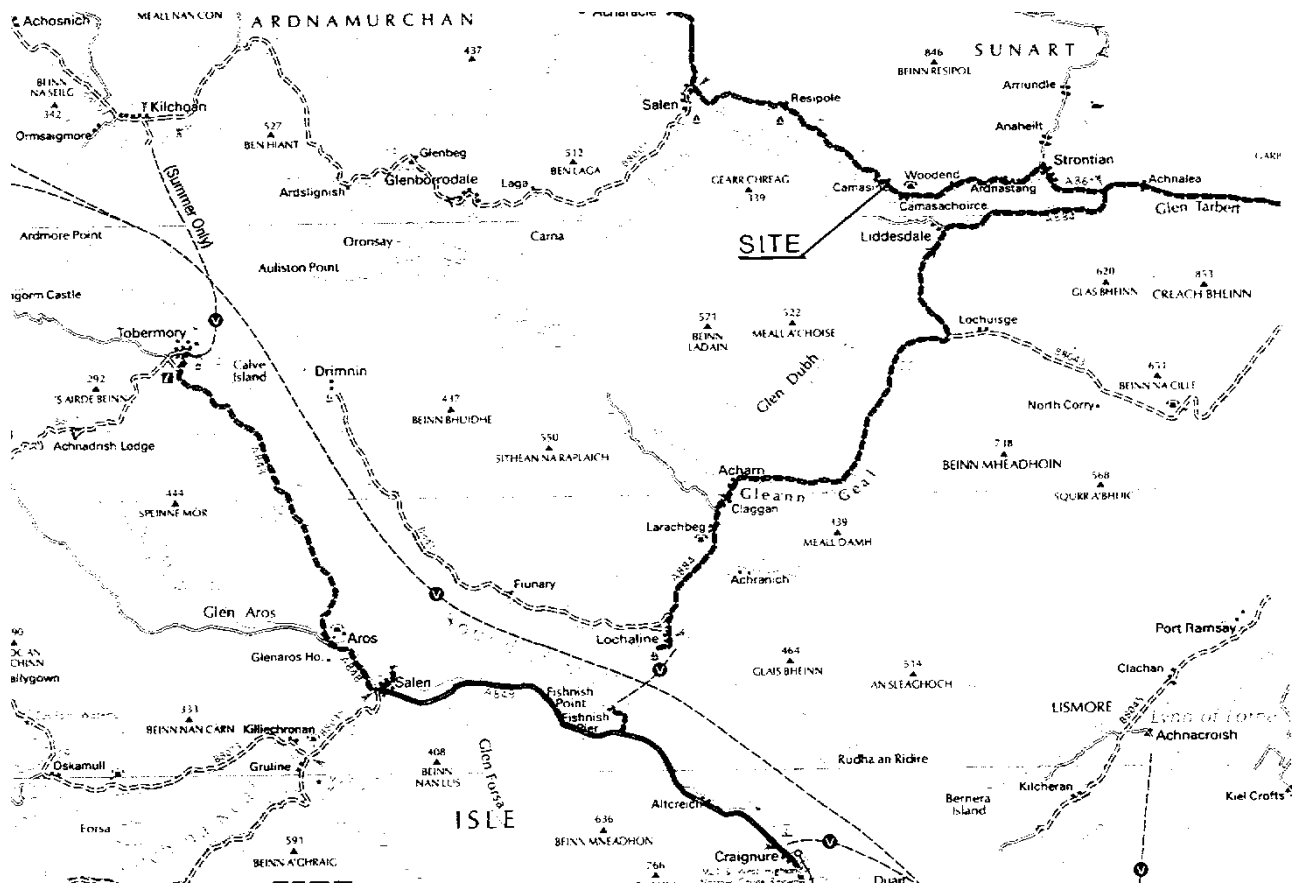
This report is for an archaeological watching brief conducted on behalf of D Kelly Design Architectural Consultant by the author for a development of a house plot and associated access and services at Camusaine, by Strontian.

Acknowledgements

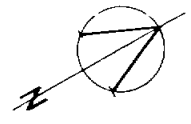
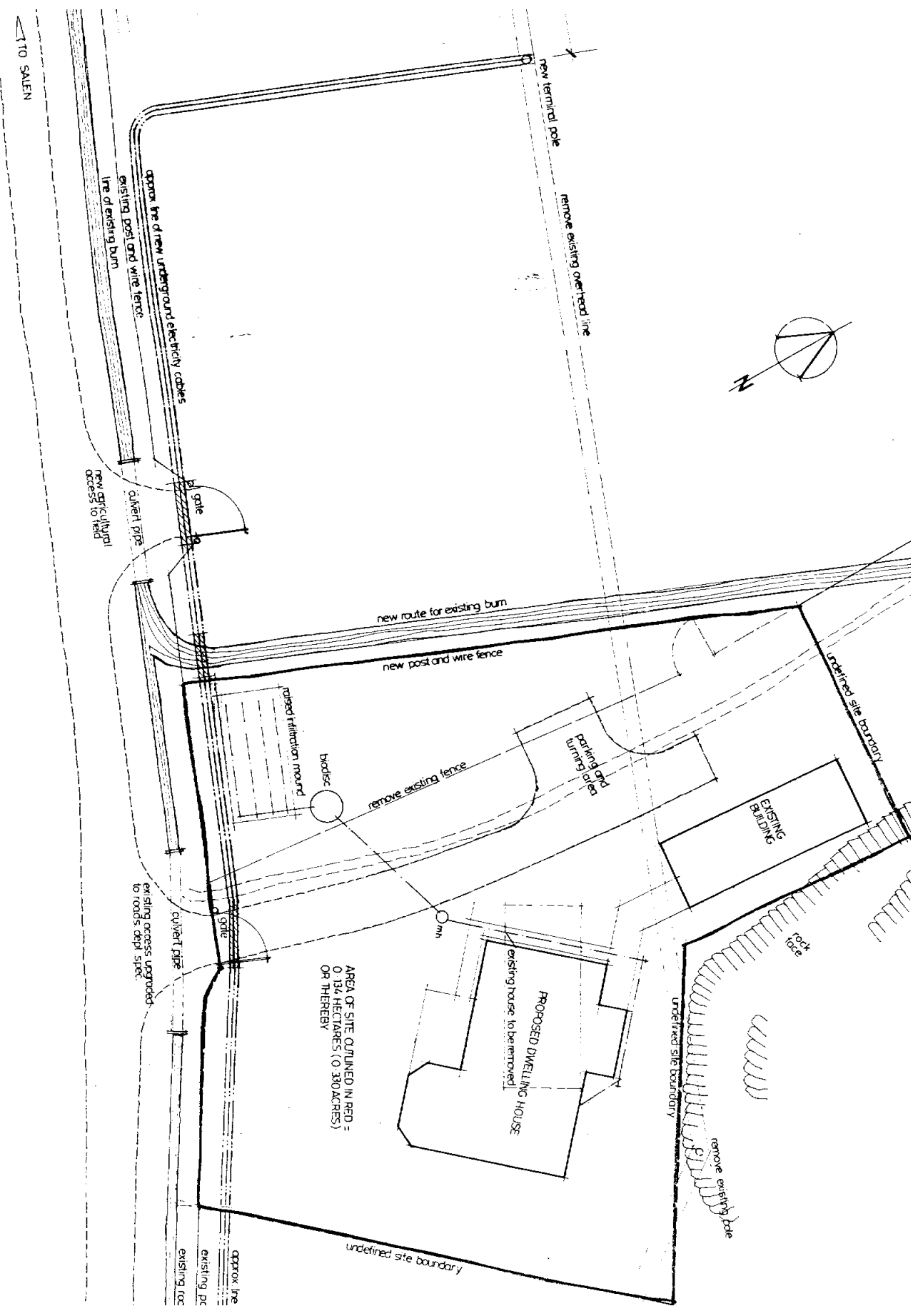
I would like to thank the following for their help during the work :

- Mr. D Kelly, of D Kelly Design Architectural Consultant;
- Staff of Camken Contractors Ltd for onsite works;
- Staff of Corbett Builders for onsite works;
- Staff of Highland Council Archaeology Unit.

Site Location



Site Location map



TO SALEH

Historical Background

The area of the development lies in the vicinity of two recorded archaeological sites. They are recorded in the Highland Council Sites and Monuments Record and in the National Monuments Record of Scotland CANMORE database as follows :

- NM 76 SE 1 (NMRS 2) – Camasine – cairn at NM 7584 6117 that is a Scheduled Ancient Monument. Cairn is robbed out partially.
- NM 76 SE 14 (NMRS 14) – Ceol Na Mara – rectangular structure at NM 756 615.

The site itself is a former croft of an early 20th century date, which was demolished at the commencement of this project. (See below)

Objectives

To conduct a watching brief on the excavation of the house plot, new services and access road to record those features revealed by excavation work. A copy of the specification provided by Highland Council Archaeology Unit is enclosed.

Site Conditions

The area under investigation was formerly part of a former croft with the ground being formerly part of an area of garden and a small adjacent field.

Weather on the days of work –

26th – 27th June 2001 was slightly cloudy with periods of rain;
18th December was a bright sunny day, with low sun.

Watching Brief Investigation

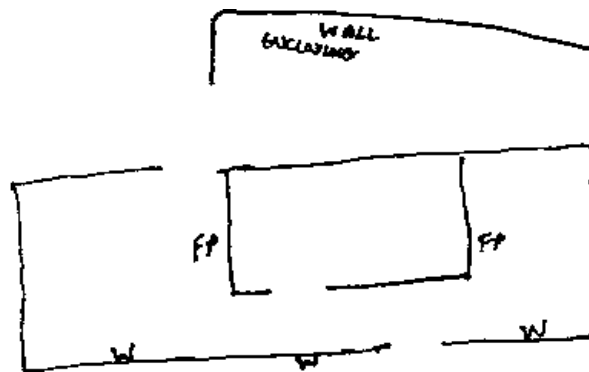
The watching brief was carried out in accordance with accepted professional archaeological standards as published by the Institute of Field Archaeologists (IFA 1999). Over the construction period a suitably qualified archaeologist was on site to carry out observations and assessment of the area affected by the excavation works.

Results

The archaeological watching brief comprised of 3 areas of monitoring:

- 1- Creation of new burn and new access road;
- 2- Demolition of the former croft and subsequent new house plot;
- 3- Trench for electricity cable.

- 1- A new burn was installed due to the need for a wider access road and turning area. (See plan) Underlying the turf and topsoil, of an average depth of 150mm was a natural of brownish-orange fine silty gravel. Areas of the access road were heavily disturbed in area of the former croft. No archaeological features or deposits were revealed.
- 2- The former croft (centred NM 7566 6127) consisted of rubble built building with a corrugated iron roof, with 3 windows and a door to the front and a door to the rear. The external walls were harled. With 2 internal fireplaces and an enclosing boundary wall to the rear. Internally the house was of 3 rooms, with wooden panelling to half wall height. There was no sign of a kitchen or a bathroom or any



FP – Fireplace

W - window

electricity or water supply. All the wood was machine cut and there were signs of later alterations in the form of newer wood and concrete.

The foundations of the croft lying on the same natural of brownish-orange fine silty gravel. The new house plot was sited in the same area of the former croft; excavation of the house plot revealed no archaeological deposits or features.

3 – A monitoring was made of the excavation of trench for an electricity supply cable currently overhead. This trench lay 10m close to the cairn to the east, a trench 0.35m wide by c140m long by 0.6m deep was excavated. Underlying turf and topsoil, of an average depth of 150mm was a natural of brownish-orange fine silty gravel. No archaeological features or deposits were revealed.

No other archaeological features were evident in the area around the croft.

Recommendations

No recommendations with regards to this development project are to be proposed.

Archive

Notebook of results and a set of colour slides showing the progress of the work is to be deposited in the National Monuments Record in Edinburgh. A set of colour slides on CD disc showing the progress of the work has been deposited with Highland Council Sites and Monuments Record.

References

Highland Sites and Monuments Record entry NM 76 SE 1 & 14.

IFA (1999) By-laws, Standards and Policy Statements of the Institute of Field Archaeologists. Reading.

National Monuments Record of Scotland CANMORE database entry NM 76 SE 2 & 14.

Stuart Farrell
39a Park Street
Nairn
Highland
IV12 4PP

Appendix 1 – Details of Slides

Notebook of results to be deposited in the National Monuments Record in Edinburgh.
A set of colour slides showing the progress of the work has been deposited with
Highland Council Sites and Monuments Record.

1 – View of machining of new burn facing NW	26-7-01
2 – View of existing outbuilding facing N	26-7-01
3 – View of croft facing N	26-7-01
4 – View of croft facing E	26-7-01
5 – View of 'new burn' upon excavation facing S	26-7-01
6 – View of culvert (?) by old burn. Scale 1m.	26-7-01
7 – ibid.	
8 – View of rear of croft facing E	26-7-01
9 – View of demolition of croft facing E	26-7-01
10 – View of demolition of croft facing NE	26-7-01
11 – View of demolition of croft facing E	26-7-01
12 – View of demolition of croft facing E	26-7-01
13 – View of cleared ground (site of new house) facing NE	27-7-01
14 – View of track for house electricity supply facing W	18-12-01
15 – View of site for cable trench facing E	18-12-01
16 – ibid but facing W	18-12-01
17 – View of machining	18-12-01
18 – View of trench during excavation	18-12-01
19 – View of machining facing W	18-12-01
20 – View of cairn NM76SE 1	18-12-01
21 – View of trench facing E	18-12-01