

**Report of Archaeological Watching Brief  
November 2003 - February 2004  
Urchany Water Mains Renewal  
Project, Nairnshire**

Client: Halcrow Group Ltd on behalf of Scottish Water

**By  
Stuart Farrell  
B.A A.I.F.A F.S.A.Scot.  
March 2004**

**Figure 1 – General Location 1:50,000 – locations circled.**  
Copyright Ordnance Survey. Licence 100041016.



## **Contents**

- 1. Introduction**
- 2. Acknowledgements**
- 3. Background**
- 4. Objectives**
- 5. Method**
- 6. Watching Brief**
- 7. Conclusions**
- 8. Recommendations**
- 9. Archive**
- 10. Discovery and Excavation**
- 11. References**

**Appendix 1 – Photographic Register**

## **Non-Technical Summary**

*Stuart Farrell was commissioned by Halcrow Group Ltd on behalf of Scottish Water in July 2003 to undertake an archaeological watching brief at Geddes and Auldearn as part of the Urchany Water Mains Renewal Project, this work followed on the recommendations of a previously conducted desktop and walkover survey.*

*Work in the centre of the village of Auldearn revealed no archaeological features or deposits only natural sands and gravels.*

*Work close to the graveyard at Geddes revealed no archaeological features or deposits only natural sands and gravels.*

*No recommendations for further work have been proposed.*

## **1. Introduction**

This report is for an archaeological watching brief conducted for Halcrow Group Ltd on behalf of Scottish Water by the author for the Urchany water mains renewal project at Auldearn and Geddes. This work is to follow on recommendations that had been made in a desktop and walkover survey.

The work was conducted between November 26<sup>th</sup> 2003 and February 23<sup>rd</sup> 2004.

## **2. Acknowledgements**

I would like to thank the following for their help during the work:

- Mr. A Barnett, of Halcrow Group Ltd;
- Mr. M Mackay, of Halcrow Group Ltd;
- Mr. S Murray, of Scottish Water Contracting;
- Mr. M Turner, of Scottish Water Contracting
- Staff of Scottish Water Contracting for onsite works;
- Staff of Highland Council Archaeology Unit.

Stuart Farrell  
39a Park Street  
Nairn  
Highland  
IV12 4PP

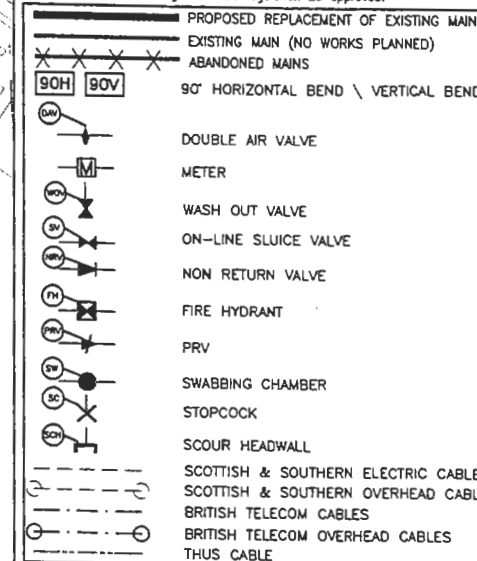


THE COPYRIGHT IN THIS DRAWING IS THE PROPERTY OF EARTH TECH ENGINEERING LTD AND THE DRAWING MAY NOT BE REPRODUCED IN WHOLE OR IN PART, IN ANY FORM, WHETHER BY PHOTOGRAPH, PHOTOCOPYING OR REPRODUCTION AS A THREE DIMENSIONAL ARTICLE WITHOUT THE WRITTEN PERMISSION OF EARTH TECH ENGINEERING LTD.

SCALE 1:1250  
0 25 50 75 100 125

### Notes

1. All dimensions in millimetres unless stated otherwise.
2. Standard cover to pipes 900mm minimum.
3. For details of Swab chambers/meters refer to Drawing No. A/G3173/A0031
4. For details of Hydrants refer to Drawing No. A/G3173/A0021
5. For details of Double Air Valves and Branch Connection refer to Drawing No. A/G3173/A0022
6. For details of Sluice Valves & Restraint Blocks refer to Drawing No. A/G3173/A0023
7. For Pipe Bedding and reinstatement details refer to Drawing No. A/G3173/A0024
8. For details of burn and ditch crossings refer to Drawing No. A/G3173/A0025
9. For marker posts details refer to Drawing No. A/G3173/A0026
10. For details of Scour and Headwall refer to Drawing No. A/G3173/A0027
11. For Land Drain Reinstatement details refer to Drawing No. A/G3173/A0028
12. For Dry Stone Wall Reinstatement details refer to Drawing No. A/G3173/A0029
13. For details of boundary box and stop tap refer to Drawing No. A/G3173/A0030
14. Indicator posts to be provided at all valves and field boundaries unless otherwise directed.
15. Route and level of pipe to be altered if necessary and as directed on site to provide continuous falls from air valves/scour valves at a minimum gradient of 1:250.
16. All 90° bends shall be long radius bends unless stated otherwise.
17. All sluice valves shall be anti-clockwise closing.
18. All ductile iron pipework shall be PAM Natural or similar approved.
19. All HPPE pipework shall be PE100 SDR 17 with a minimum working pressure of 10 Bar or PE100 SDR 11 with a minimum working pressure of 16 bar
20. All MDPE pipework shall be PE80 SDR 11 with a minimum working pressure of 12.5 Bar.
21. All joints to be butt welded.
22. All VJ flange adaptors and couplings to have full end restraint.
23. All pipework and fittings shall be regulation 25 approved.



C3	22AUG03	PIPEWORK AMENDED AT ROUTE END	NB	CL	BC
C2	01AUG03	PIPEWORK ARRANGEMENT AT GLEBE COTTAGES AMENDED	NB	CL	BC
C1	21AUG03	CONSTRUCTION ISSUE	NB	CL	BC
A1	15AUG03	APPROVED	NB	CL	BC
P2	12AUG03	CONSTRUCTION TARGET PRICE ISSUE	NB	CL	BC
P1	10FEB03	ISSUED FOR ARCHAEOLOGICAL SURVEY	NB	CL	BC
P0	22JUN03	UNCONTROLLED DRAFT COPY	NB	CL	BC
REV	DATE	REVISION DETAILS	NB	CL	BC

### DRAWING REV. KEY

- P0 - UNCONTROLLED DRAFT COPY  
P - CHECKED  
A - APPROVED  
C - CONSTRUCTION ISSUE

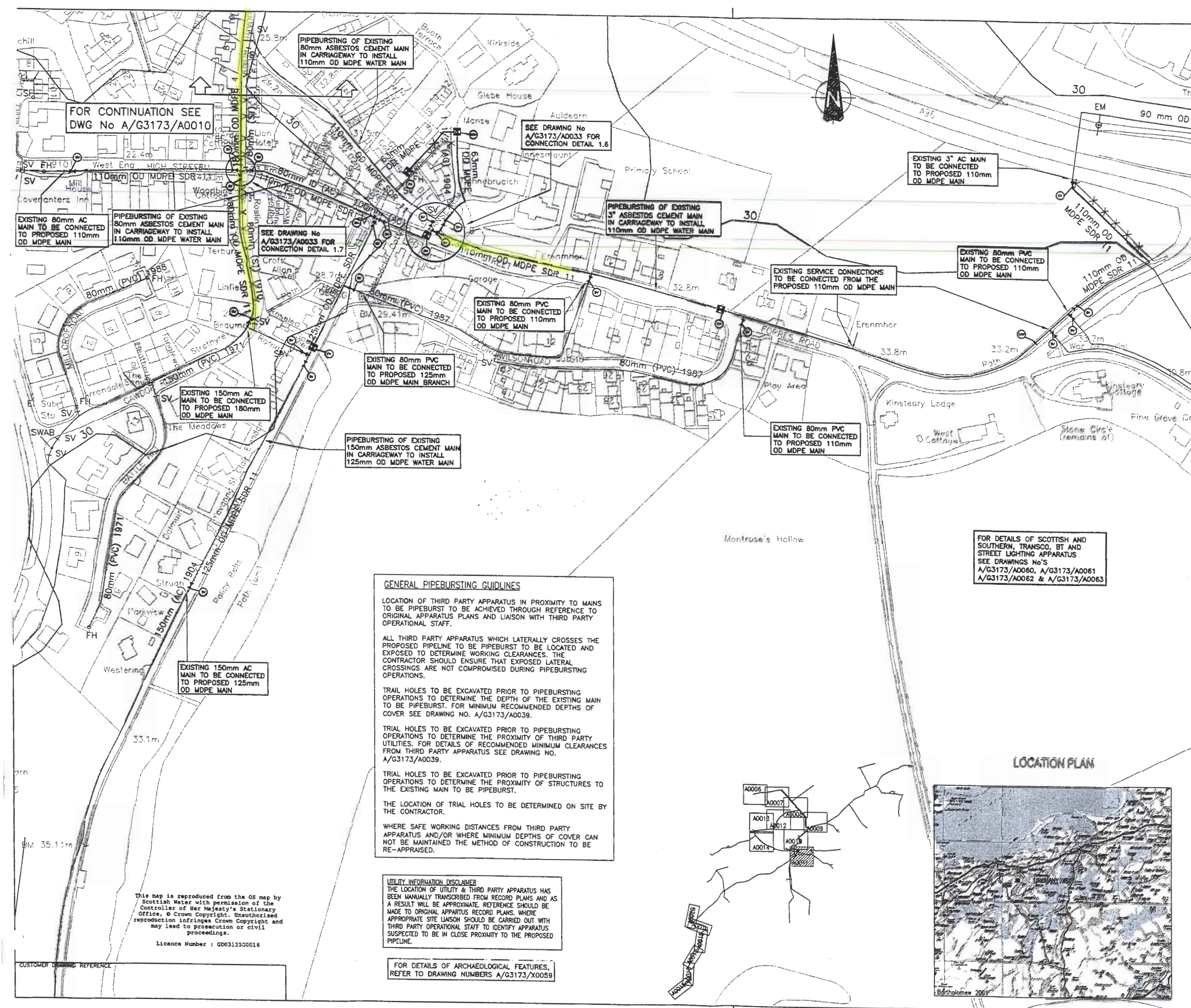
CUSTOMER  
**SCOTTISH WATER**  
TORRIDON HOUSE  
BEECHWOOD BUSINESS PARK  
INVERNESS  
IV2 3BW  
TEL. (+44) 01463 228000  
FAX. (+44) 01463 228101

PROJECT  
**URCHANY WATER SUPPLY ZONE  
MAINS RENEWALS**

DRAWING TITLE  
**URCHANY WSZ  
ROUTE PLAN  
SHEET 6 OF 15**

PRODUCED BY  
**EARTH TECH ENGINEERING LIMITED**  
8 BRINDLEY WAY  
41 BUSINESS PARK  
WAKEFIELD WF2 0XQ  
TEL. (+44) 01924 884704  
FAX. (+44) 01924 884711

SCALE  
1:1250  
DOCUMENT NUMBER  
A/G 3173 / A 0011  
REV  
C3



### GENERAL PIPEBURSTING GUIDELINES

LOCATION OF THIRD PARTY APPARATUS IN PROXIMITY TO MAINS TO BE PIPEBURST TO BE ACHIEVED THROUGH REFERENCE TO ORIGINAL APPARATUS PLANS AND LIAISON WITH THIRD PARTY OPERATIONAL STAFF.

ALL THIRD PARTY APPARATUS WHICH LATERALLY CROSSES THE PROPOSED PIPELINE TO BE PIPEBURST TO BE LOCATED AND EXPOSED TO DETERMINE WORKING CLEARANCES. THE CONTRACTOR SHOULD ENSURE THAT EXPOSED LATERAL CROSSINGS ARE NOT COMPROMISED DURING PIPEBURSTING OPERATIONS.

TRIAL HOLES TO BE EXCAVATED PRIOR TO PIPEBURSTING OPERATIONS TO DETERMINE THE DEPTH OF THE EXISTING MAIN TO BE PIPEBURST. FOR MINIMUM RECOMMENDED DEPTHS OF COVER SEE DRAWING NO. A/G3173/A0039.

TRIAL HOLES TO BE EXCAVATED PRIOR TO PIPEBURSTING OPERATIONS TO DETERMINE THE PROXIMITY OF THIRD PARTY UTILITIES. FOR DETAILS OF RECOMMENDED MINIMUM CLEARANCES FROM THIRD PARTY APPARATUS SEE DRAWING NO. A/G3173/A0039.

TRIAL HOLES TO BE EXCAVATED PRIOR TO PIPEBURSTING OPERATIONS TO DETERMINE THE PROXIMITY OF STRUCTURES TO THE EXISTING MAIN TO BE PIPEBURST.

THE LOCATION OF TRIAL HOLES TO BE DETERMINED ON SITE BY THE CONTRACTOR.

WHERE SAFE WORKING DISTANCES FROM THIRD PARTY APPARATUS AND/OR WHERE MINIMUM DEPTHS OF COVER CAN NOT BE MAINTAINED THE METHOD OF CONSTRUCTION TO BE RE-APPRAISED.

### UTILITY INFORMATION DISCLAIMER

THE LOCATION OF UTILITY & THIRD PARTY APPARATUS HAS BEEN MANUALLY TRANSCRIBED FROM RECORD PLANS AND AS A RESULT WILL BE APPROXIMATE. REFERENCE SHOULD BE MADE TO ORIGINAL APPARATUS RECORD PLANS. WHERE APPROPRIATE SITE LIAISON SHOULD BE CARRIED OUT WITH THIRD PARTY OPERATIONAL STAFF TO IDENTIFY APPARATUS SUSPECTED TO BE IN CLOSE PROXIMITY TO THE PROPOSED PIPELINE.

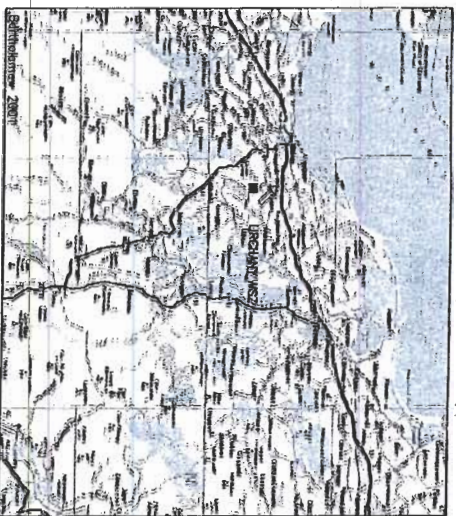
FOR DETAILS OF ARCHAEOLOGICAL FEATURES, REFER TO DRAWING NUMBERS A/G3173/X0059

This map is reproduced from the OS map by Scottish Water with permission of the Controller of Her Majesty's Stationary Office. © Crown Copyright. Unauthorised reproduction infringes Crown Copyright and may lead to prosecution or civil proceedings.

Licence Number : GD0313550016

CUSTOMER DRAWING REFERENCE





## LOCATION PLAN

## GENERAL PIPEBURSTING GUIDELINES

LOCATION OF THIRD PARTY APPARATUS IN PROXIMITY TO MAINS TO BE PIPEBURST TO BE ACHIEVED THROUGH REFERENCE TO ORIGINAL APPARATUS PLANS AND LIAISON WITH THIRD PARTY OPERATIONAL STAFF.

ALL THIRD PARTY APPARATUS WHICH LATEROALLY CROSSES PROPOSED PIPELINE TO BE PIPEBURST TO BE LOCATED AND EXPOSED TO DETERMINE WORKING CLEARANCES. THE CONTRACTOR SHOULD ENSURE THAT EXPOSED LATERAL CROSSINGS ARE NOT COMPROMISED DURING PIPEBURSTING OPERATIONS.

TRAIL HOLES TO BE EXCAVATED PRIOR TO PIPEBURSTING OPERATIONS TO DETERMINE THE DEPTH OF THE EXISTING MAIN TO BE PIPEBURST. FOR MINIMUM RECOMMENDED DEPTHS OF COVER SEE DRAWING NO. A/G3173/A0039.

TRIAL HOLES TO BE EXCAVATED PRIOR TO PIPEBURSTING OPERATIONS TO DETERMINE THE PROXIMITY OF THIRD PARTY UTILITIES. FOR DETAILS OF RECOMMENDED MINIMUM CLEARANCES FROM THIRD PARTY APPARATUS SEE DRAWING NO. A/G3173/A0039.

TRIAL HOLES TO BE EXCAVATED PRIOR TO PIPEBURSTING OPERATIONS TO DETERMINE THE PROXIMITY OF STRUCTURES TO THE EXISTING MAIN TO BE PIPEBURST.

THE LOCATION OF TRIAL HOLES TO BE DETERMINED ON SITE BY THE CONTRACTOR.

WHERE SAFE WORKING DISTANCES FROM THIRD PARTY APPARATUS AND/OR WHERE MINIMUM DEPTHS OF COVER CANNOT BE MAINTAINED THE METHOD OF CONSTRUCTION TO BE RE-APPRAISED.

PRIVATE SERVICE TO BOATH HOUSE  
LODGE & COTTAGE

FOR CONTINUATION SEE  
DWG No A/G3173/A0009

OVERHEAD  
POWER CABLE

EXISTING SERVICE TO  
CONNECT TO PROPOSED  
125mm OD MDPE BRANCH

UNDERGROUND  
ELECTRIC CABLE

OVERHEAD  
POWER CABLE

PIPEBURSTING OF EXISTING  
80mm ASBESTOS CEMENT  
MAIN IN ROAD TO INSTALL  
90mm OD MDPE WATER MAIN

CONNECT PROPOSED 150mm  
/ 125mm OD MDPE MAINS INTO  
EXISTING 125mm OD MDPE  
MAIN TO OVERCOME ROAD  
CROSSING SEE DRAWING  
No A/G3173/AD033 FOR  
CONNECTION DETAIL 1.5

PIPEBURSTING OF EXISTING  
80mm ASBESTOS CEMENT  
MAIN IN ROAD TO INSTALL  
110mm OD MDPE WATER MAIN

FOR CONTINUATION SEE  
DWG No A/G3173/A00

WATER MAINS  
CONNECT TO PROPOSED  
SERVICES TO

UTILITY INFORMATION DISCLOSURE  
THE LOCATION OF UTILITY & THIRD PARTY APPARATUS HAS BEEN MANUALLY TRANSCRIBED FROM RECORD PLANS AND A RESULT WILL BE APPROXIMATE. REFERENCE SHOULD BE MADE TO ORIGINAL APPARATUS RECORD PLANS WHERE APPROPRIATE. SITE LAYOUTS SHOULD BE CARRIED OUT WITH THIRD PARTY OPERATIONAL STAFF TO IDENTIFY APPARATUS SUSPECTED TO BE IN CLOSE PROXIMITY TO THE PROPOSED PIPELINE.

FOR DETAILS OF ARCHAEOLOGICAL FEATURES,  
REFER TO DRAWING NUMBERS A/G3173/X005

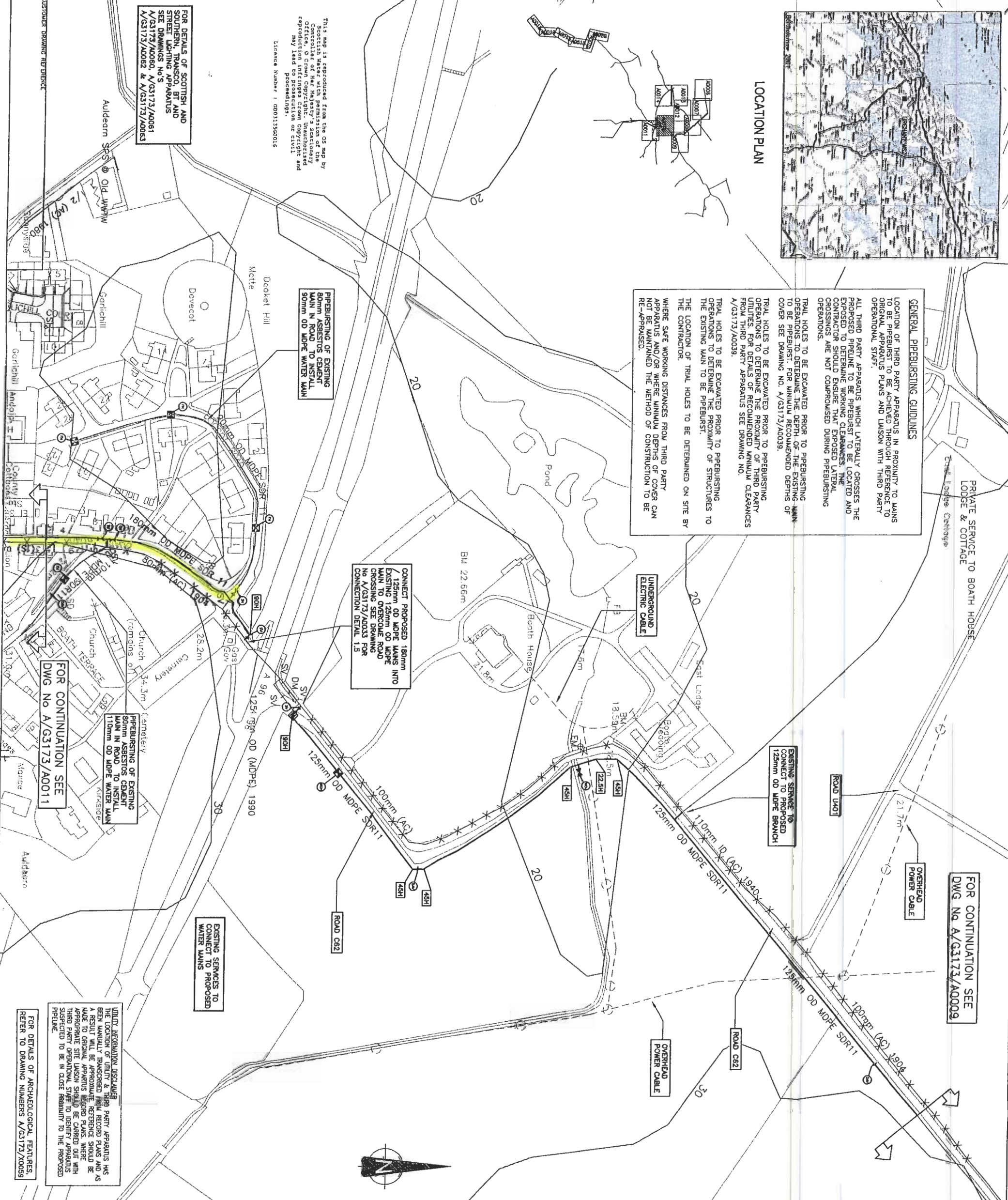
This map is reproduced from the OS map by  
Scottish Water with permission of the  
Controller of Her Majesty's Stationary  
Office, © Crown Copyright. Unauthorized  
reproduction infringes Crown Copyright and  
may lead to prosecution or civil  
proceedings.

License Number: GD011356016

Licence Number : GD03135G0016

FOR DETAILS OF SCOTTISH AND SOUTHERN, TRANSCO, BT AND STREET LIGHTING APPARATUS SEE DRAWINGS No'S  
N/G3173/A0060, N/G3173/A0061  
N/G3173/A0062 & N/G3173/A0063

### CUSTOMER DRAWING REFERENCE



THE COPYRIGHT IN THIS DRAWING IS THE PROPERTY OF EARTH TECH ENGINEERING LTD AND THE DRAWING MAY NOT BE REPRODUCED IN WHOLE OR IN PART, IN ANY FORM, WHETHER BY PHOTOGRAPH, PHOTOCOPYING OR REPRODUCTION AS A THREE DIMENSIONAL ARTICLE WITHOUT THE WRITTEN PERMISSION OF EARTH TECH ENGINEERING LTD.

SCALE 1:1250



## Notes

1. All dimensions in millimeters unless stated otherwise.
2. Standard cover to plates 900mm minimum.
3. For details of Sash chambers/makers refer to Drawing No. A/CS173/A00231
4. For details of Hydrants refer to Drawing No. A/CS173/A0021
5. For details of Double Air Valves and Branch Connection refer to Drawing No. A/CS173/A0023
6. For details of Suez Valves & Restroom Blocks refer to Dwg No. A/CS173/A0023
7. For Pipe Bedding and reinstatement details refer to Drawing No. A/CS173/A0023
8. For details of burn and ditch crossings refer to Drawing No. A/CS173/A0023
9. For manhole posts details refer to Drawing No. A/CS173/A0026
10. For details of Scarer and Headroll refer to Drawing No. A/CS173/A0028
11. For Land Drain Reinstatement details refer to Drawing No. A/CS173/A0028
12. For Dry Stone Wall Reinstatement details refer to Drawing No. A/CS173/A0023
13. For details of boundary box and stop top refer to Drawing No. A/CS173/A0023
14. Indicator posts to be provided at all loops and field boundaries unless otherwise directed.
15. Route and level of pipe to be offered if necessary and as directed on site to provide continuous falls from air valves/scour valves at a minimum gradient of 1:250.
16. All 90° bends shall be long radius bends unless stated otherwise.
17. All sluice valves shall be anti-drainage closing.
18. All ductile iron openwork shall be PNM, hot-dip galvanized, similar approved.
19. All HPIE openwork shall be PE100 SR 17 with a minimum working pressure of 10 Bar or PE100 SR11 with a minimum working pressure of 16 Bar
20. All MDEE openwork shall be PE80 SR 11 with a minimum working pressure of 12.5 Bar.
21. All joints to be built welded.
22. All VV large adaptors and couplings to have full and restraint.
23. All pipework and fittings shall be regulation 25 approved.

PROPOSED REPLACEMENT OF EXISTING MAIN  
EXISTING MAIN (NO WORKS PLANNED)  
ABANDONED MAINS  
90° HORIZONTAL BEND \ VERTICAL BEND

DOUBLE AIR VALVE  
METER  
WASH OUT VALVE  
ON-LINE SLUCE VALVE  
NON RETURN VALVE  
FIRE HYDRANT  
PRV  
SWABBING CHAMBER  
STOPCOCK  
SCOUR HEADWALL  
SCOTTISH & SOUTHERN ELECTRIC CABLES  
SCOTTISH & SOUTHERN OVERHEAD CABLES  
BRITISH TELECOM CABLES  
BRITISH TELECOM OVERHEAD CABLES  
THUS CABLE

DRAWING REV. KEY  
P0 - UNCONTROLLED DRAFT COPY  
P - CHECKED  
A - APPROVED  
C - CONSTRUCTION ISSUE

**SCOTTISH  
WATER**

TORRION HOUSE  
BEECHWOOD BUSINESS PARK  
INVERNESS  
IV2 3BW  
TEL (+44) 01463 228000

URCHANY WATER SUPPLY ZONE  
MAINS RENEWALS

URCHANY WSZ  
ROUTE PLAN  
SHEET 5 OF 15

၁၁

**E A R T H**  **Y E O**  
**ENGINEERING LIMITED**  
8 BRINDLEY WAY  
41 BUSINESS PARK  
WAKEFIELD WF2 0XD  
TEL (0444) 01924 884704  
FAX: (0444) 01924 884711

SCALE	DOCUMENT NUMBER	REV
1:1250	A/G 3173 / A0010	C



DO NOT SCALE

THE COPYRIGHT IN THIS DRAWING IS THE PROPERTY OF EARTH TECH ENGINEERING LTD  
AND THE DRAWING MAY NOT BE REPRODUCED IN WHOLE OR IN PART, IN ANY FORM, WHETHER  
BY PHOTOGRAPH, PHOTOCOPYING OR REPRODUCTION AS A THREE DIMENSIONAL ARTICLE  
WITHOUT THE WRITTEN PERMISSION OF EARTH TECH ENGINEERING LTD.

SCALE 1:1250

0      25m      50m      75m      100m      125m

## Notes

1. All dimensions in millimetres unless stated otherwise.
2. Standard cover to pipes 900mm minimum.
3. For details of swab chamber/meter details refer to Drawing No. A/G3173/A0058
4. For details of meters refer to Drawing No. A/G3173/A0058
5. For details of Hydrants and Scours refer to Drawing No. A/G3173/A0021
6. For details of Double Air Valves refer to Drawing No. A/G3173/A0022
7. For details of Sluice Valves & Restraint Blocks refer to Dwg No. A/G3173/A0023
8. For Pipe Bedding and reinstatement details refer to Drawing No. A/G3173/A0024
9. For details of burn and ditch crossings refer to Drawing No. A/G3173/A0025
10. For marker posts details refer to Drawing No. A/G3173/A0026
11. For Scour Headwall details refer to Drawing No. A/G3173/A0027
12. For Land Drain Reinstatement details refer to Drawing No. A/G3173/A0028
13. For Dry Stone Wall Reinstatement details refer to Drawing No. A/G3173/A0029
14. For Boundary Box details refer to Drawing No. A/G3173/A0030
15. Indicator posts to be provided at all valves and field boundaries unless otherwise directed.
16. Route and level of pipe to be altered if necessary and as directed on site to provide continuous falls from air valves/scour valves at a minimum gradient of 1:250.
17. All 90° bends shall be long radius bends unless stated otherwise.
18. All valves shall be anti-clockwise closing.
19. All ductile iron pipework shall be PAW Natural or similar approved.
20. All HPPE pipework shall be PETIO SDR 17 with a minimum working pressure of 10 MPa or PE80 SDR 17 with a minimum working pressure of 10 Bar.
21. All MDPE pipework shall be PE80 SDR 11 with a minimum working pressure of 12.5 Bar.
22. All joints to be butt welded.
23. All VJ flange adaptors and couplings to have full end restraint.
24. All pipe and fittings shall be regulation 25 approved.

### PROPOSED REPLACEMENT OF EXISTING MAIN

— EXISTING MAIN (NO WORKS PLANNED)

← ABANDONED MAINS

90° HORIZONTAL BEND \ VERTICAL BEND

DOUBLE AIR VALVE

METER

WASH OUT VALVE

ON-LINE SLUICE VALVE

### NON-RETURN VALVE

NON RETURN VALVE

FIRE HYDRANT

PRV

SWABBING CHAMBER

STOPCOCK

SCOUR HEADWALL

SCOTTISH &amp; SOUTHERN ELECTRIC CABLE

SCOTTISH & SOUTHERN OVERHEAD CABLE

BRITISH TELECOM CABLES

BRITISH TELECOM OVERHEAD CABLES

THUS CABLE

C1	21.AUG.03	CONSTRUCTION ISSUE	NB	CL	BC
A1	15.AUG.03	APPROVED	NB	CL	BC
P2	12.AUG.03	CONSTRUCTION TARGET PRICE ISSUE	NB	CL	-
P1	10.FEB.03	ISSUED FOR ARCHAEOLOGICAL SURVEY	NB	CL	-
P0	22.JAN.03	UNCONTROLLED DRAFT COPY	NB	-	-
REV	DATE	REVISION DETAILS	DRAWN	CHKD	APPRD

DRAWING REV. KEY

P0 - UNCONTROLLED DRAFT COPY

P - CHECKED

A - APPROVED  
C - CONSTRUCTION

11/13/73

CUSTOMER

**SCOTTISH WATER**  BEECHWOOD BUSINESS PARK  
INVERNESS  
IV2 3BW  
TEL. (+44) 01463 228000  
FAX. (+44) 01463 228101

PROJECT  
URCHANY WATER SUPPLY ZONE  
MAINS RENEWALS

DRAWING TITLE

URCHANY WSZ  
ROUTE PLAN  
SHEET 14 OF 15

4

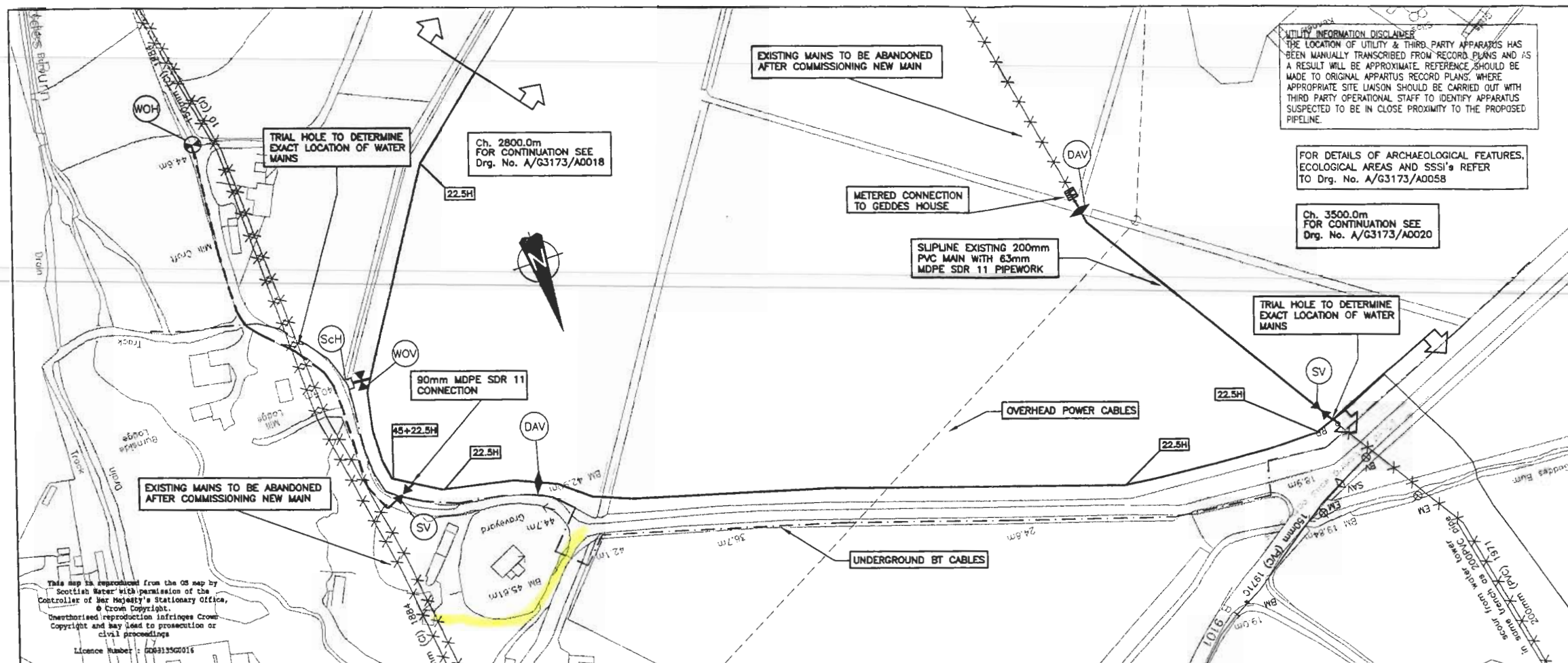
PRODUCED BY

EARTHTECH

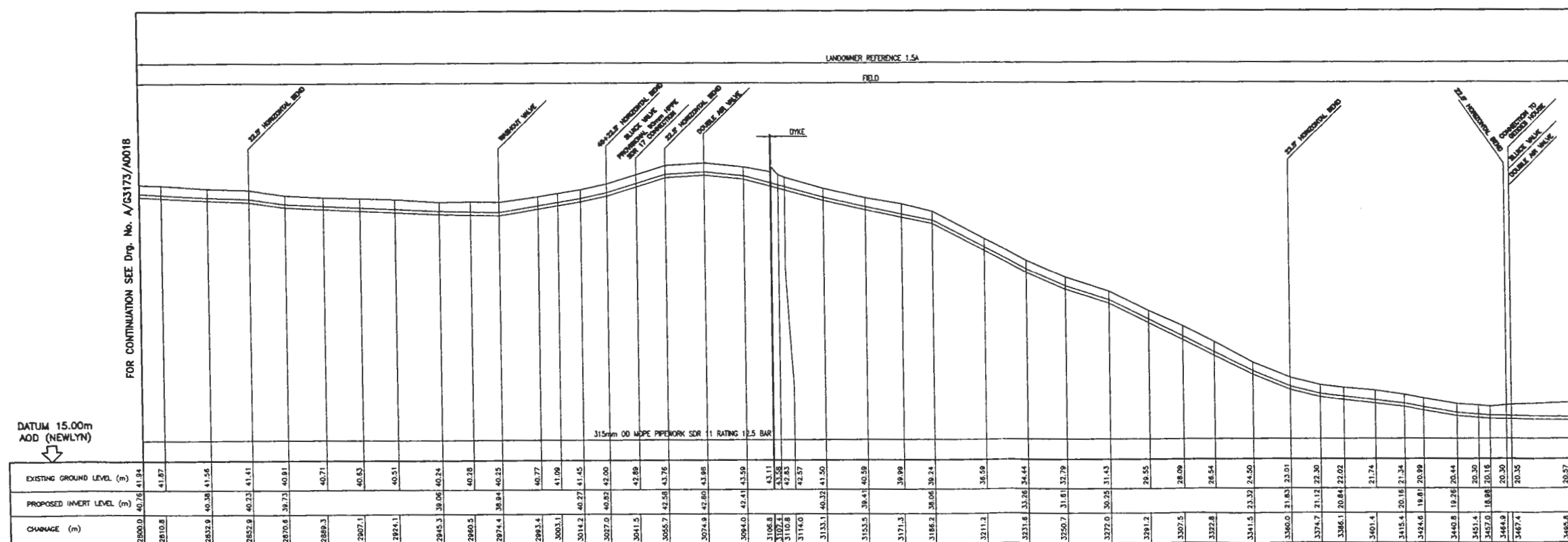
ENGINEERING LIMITED

8 BRINDLEY WAY  
41 BUSINESS PARK  
WAKEFIELD WF2 0XQ  
TEL. (+44) 01924 884704  
FAX. (+44) 01924 884711

SCALE	DOCUMENT NUMBER	REV
1:1250	A/G 3173 / A0019	C1



ROUTE PLAN  
SCALE 1:1250



LONGITUDINAL SECTION  
HORIZONTAL SCALE 1:1250 VERTICAL SCALE 1:250

FOR CONTINUATION SEE Doc No A/G1173/A0020

### **3. Archaeological Background**

The archaeological watching brief was to follow up on recommendations that had been made following 2 desk-based and walkover survey's conducted by Cathy Dagg (Dagg, 2003a & 2003b) where it was possible that archaeological deposits could be revealed, especially in relation to the chapel and market stance at Geddes, also to the work in the village of Auldearn.

### **4. Objectives**

To conduct a watching brief on the excavation of the trenching works to record those features revealed by excavation work.

### **5. Methodology**

A monitoring was made of the removal of topsoil and subsoil's (except in the town where excavations were conducted in the road and removed tarmac) to a maximum depth of 1 metre for the pipe trench. A back-acting machine with a toothed bucket excavated the trenches with possible archaeological features being cleaned by hand.

Weather on the days of work (November 26<sup>th</sup> 2003 to February 23<sup>rd</sup> 2004) was usually bright and clear.

### **6. Watching Brief Investigation**

The watching brief was carried out in accordance with accepted professional archaeological standards as published by the Institute of Field Archaeologists (IFA 1999). Over the construction period a suitably qualified archaeologist was on site to carry out observations and assessment of the area affected by the excavation works.

[All Grid References for sections of trench were obtained using a Garmin II GPS using OS Data.]

### **Results**

**1 – Auldearn** - NH 918/554 (centred) (Work conducted November 26<sup>th</sup> – December 4<sup>th</sup> 2003) (See figures 2 & 3) Work to be conducted due to lying in area of burgh. Most of the work in the town was conducted by thrusting new pipe through existing with only short sections in the village being opened up by trench.

Section 1 – Cawdor Road to High Street – NH 91895/55358 to NH 91900/55455. Work of a single trench 0.4m wide revealed no archaeological deposits or features only natural ground of sands and gravels.

Section 2 – Boath Road – NH 91883/55471 to NH 91926/55626. A series of small trenches revealed existing road to be heavily cut with existing services of gas and water. Work revealed no archaeological deposits or features only natural sand.

Section 3 – High Street – NH 92020/55412 to NH 92112/55396. A series of small trenches located to the front of the school under the existing path and road revealed only natural sand.

Overall no archaeological features or deposits were revealed only natural ground.



**2 – Geddes** - NH 88875/52880 to NH 88786/52861 (Work conducted February 19<sup>th</sup> – 23<sup>rd</sup> 2004) (See figure 4) Work to be conducted due to lying close to graveyard and market stance (Dagg, 2003a)

A series of small trenches (1m x 1m) for pipe thrusting work along road and about 5m away from graveyard wall revealed existing road by graveyard wall to be cut with existing water and telephone services. Work revealed no archaeological deposits or features only natural yellow-brown sand and small to medium rounded gravels. Topsoil and subsoil was varied to a depth of 0.3 - 0.5m, each pit was heavily disturbed by tree roots.

## **7. Conclusions**

Work in Auldearn revealed that there was no evidence that current or previous works had cut into any earlier deposits. It is therefore possible that the church of Auldearn stands alone and that the medieval village of Auldearn was very small maybe being sited close to the Castle (where the dovecot is situated) if it exists at all.

Work at Geddes revealed that there was no indication that graveyard extended outwith the existing boundary wall. No finds were made to any of the trenches made that could be related to the graveyard or the market stance.

## **8. Recommendations**

No recommendations with regard any further fieldwork for this project is to be proposed due to no features being revealed, and no further work is to be undertaken.

## **9. Archive**

The following is to be deposited in the National Monuments Record in Edinburgh:

- Notebook of results
- Copy of this report

A set of colour slides showing the progress of the work has been deposited with Highland Council Sites and Monuments Record.

## **10. Discovery & Excavation in Scotland**

A short summary of the results of this project will be submitted to the Council for Scottish Archaeology's publication *Discovery & Excavation in Scotland*.

## **11. References**

Dagg, C (2003a) Archaeological Evaluation of areas to be affected by Water Mains Replacements at Urchany, parish of Nairn, Nairnshire. Unpublished report held by HSMR.

Dagg, C (2003b) Archaeological Evaluation of Additional Sections of Tullich, Strathpeffer and Urchany Water Mains Renewal. Unpublished report held by HSMR.

IFA (1999) By-laws, Standards and Policy Statements of the Institute of Field Archaeologists. Reading.

## **Appendix 1 – Details of Slides**

1 – View of trench in Cawdor Road Auldearn facing N.	Nov/Dec 2003
2 – View of trench in Cawdor Road Auldearn facing S.	Nov/Dec 2003
3 – View of section of trench in High Street Auldearn facing W.	Nov/Dec 2003
4 – View of trench in front of school facing E.	Nov/Dec 2003
5 – View of holes in Boath Road facing S.	Nov/Dec 2003
6 – Detail of hole in Boath road showing existing services.	Nov/Dec 2003
7 – View of hole in Boath Road at junction with Church Road facing N.	Nov/Dec 2003
8 – Detail of hole in Boath Road facing S.	Nov/Dec 2003
9 – Detail of trench of Boath road at N end facing W.	Nov/Dec 2003
10 – View of route of pipeline from existing mains facing E	Feb 2004
11 – View of chapel and graveyard facing SE	Feb 2004
12 – View of excavation of trench to NE of chapel facing W	Feb 2004
13 – Detail of excavated trench facing W – scales 1m	Feb 2004
14 – Ibid	Feb 2004
15 – Ibid but facing S	Feb 2004
16 – Detail of hole in road facing E – scales 1m	Feb 2004
17 – Ibid but facing S – scales 1m	Feb 2004
18 – View of thrusting of pipe in progress facing E	Feb 2004
19 – Detail of enlarged pit to NE of chapel facing W	Feb 2004
20 – View of pit to SE of chapel	Feb 2004